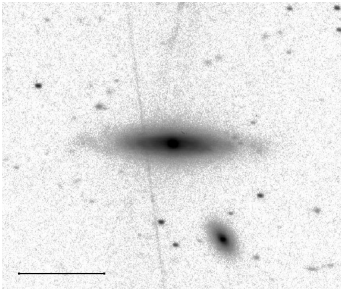
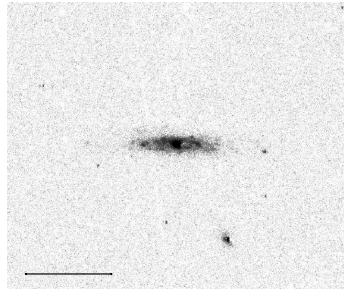


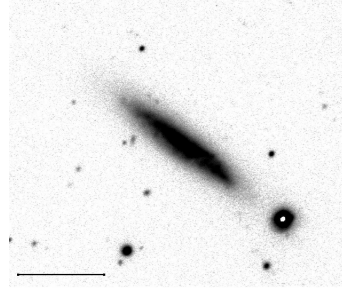
RA: 091517.0



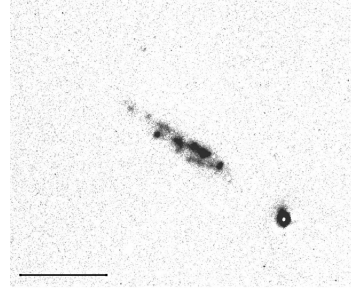
DEC: 115308.0



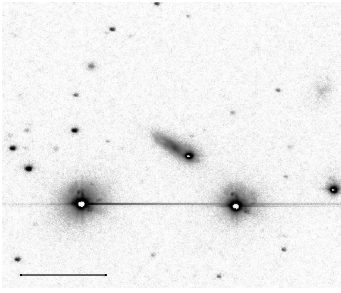
RA: 110656.9



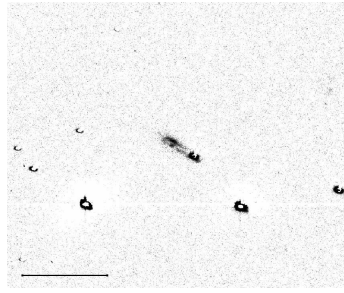
DEC: 71030.0



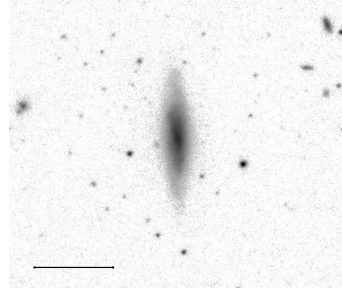
RA: 091647.4



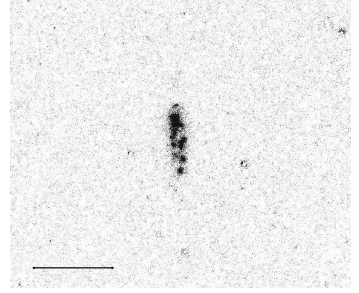
DEC: 112705.0



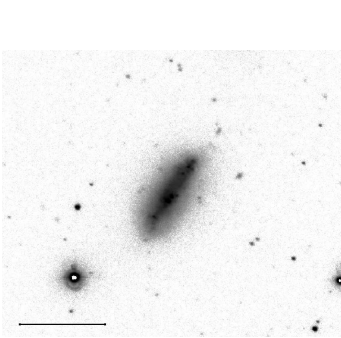
RA: 110703.5



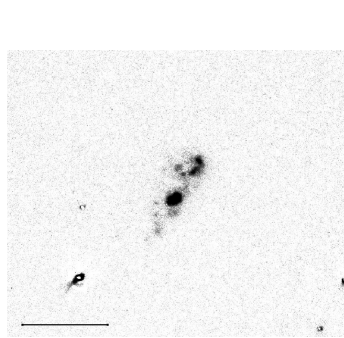
DEC: 120350.0



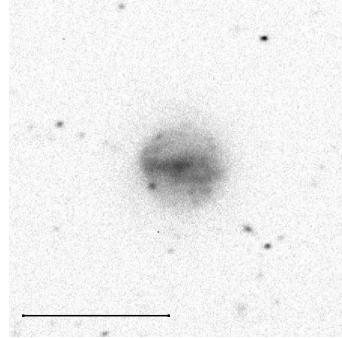
RA: 100719.7



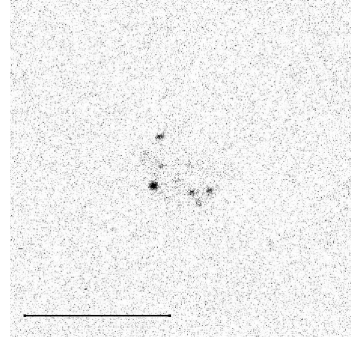
DEC: 102143.0



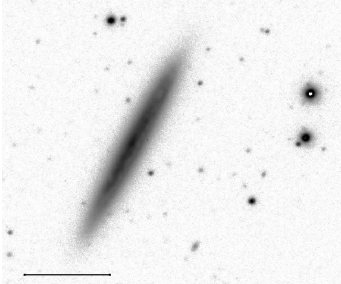
RA: 110923.2



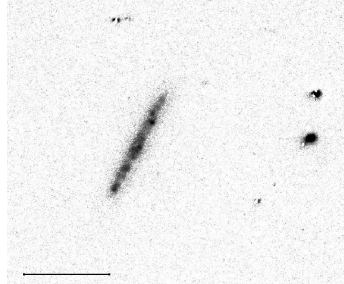
DEC: 105003.0



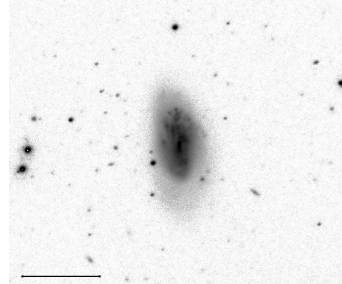
RA: 103442.8



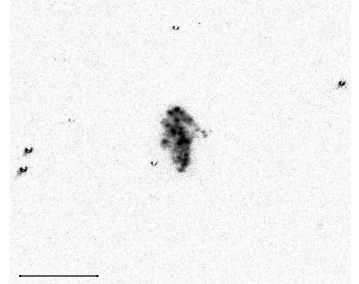
DEC: 111148.0



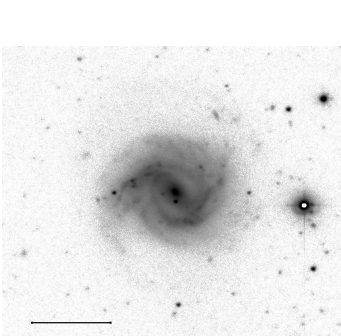
RA: 110955.9



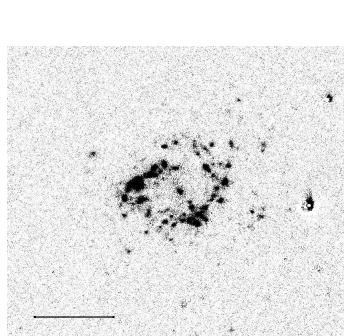
DEC: 104312.0



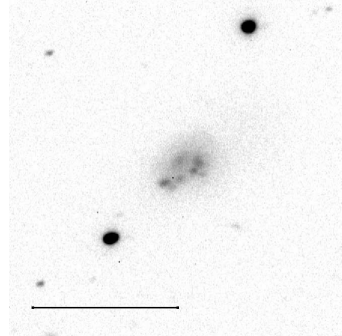
RA: 110001.6



DEC: 145012.0



RA: 111025.1



DEC: 100734.0

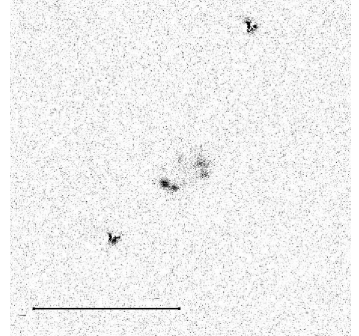
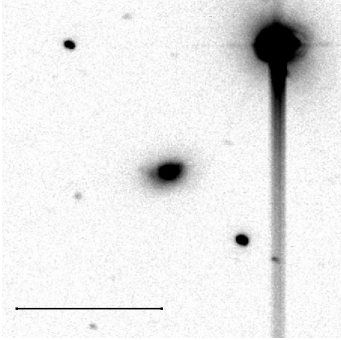
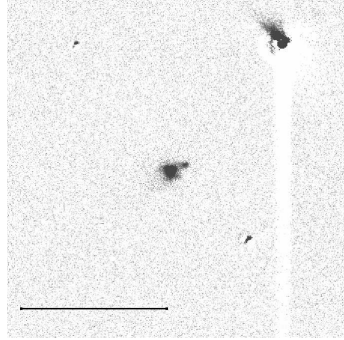


Figure 9: Atlas of 102 galaxies with substantial H $\alpha$  structure, identified by their celestial coordinates. The OFF-band (left panel) and the NET frame (right panel) are given (2 objects per line). A 1 arcmin bar is given on all images.

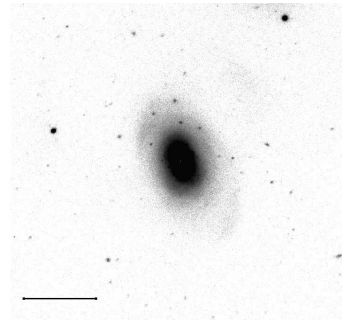
RA: 111054.1



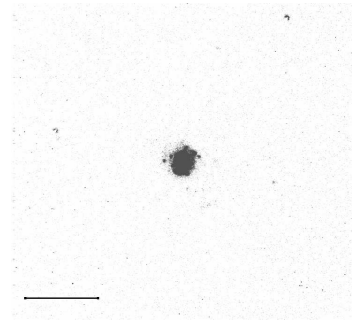
DEC: 93730.0



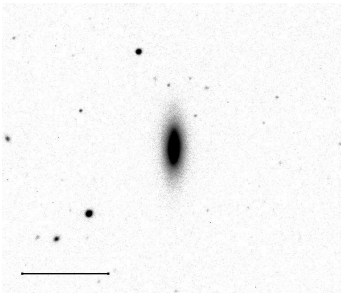
RA: 111730.3



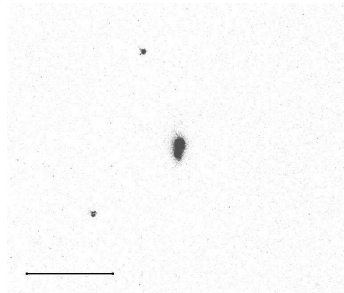
DEC: 43351.0



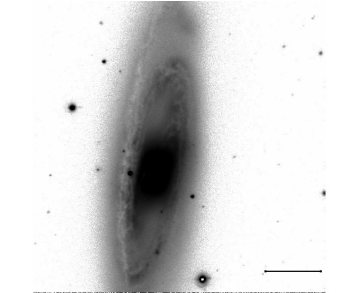
RA: 111128.4



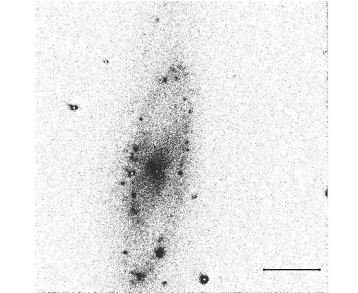
DEC: 65430.0



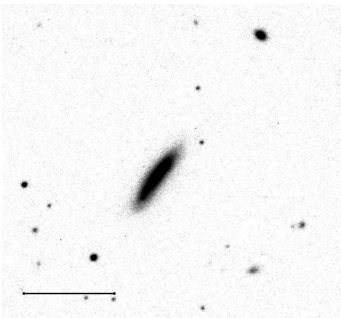
RA: 111855.7



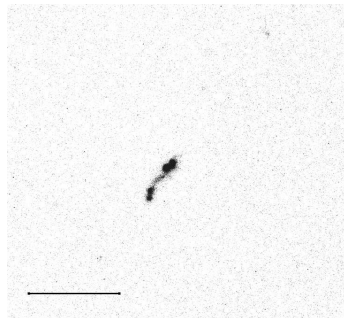
DEC: 130551.0



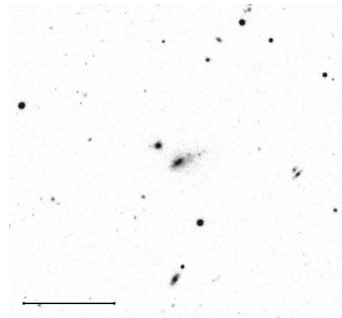
RA: 111259.9



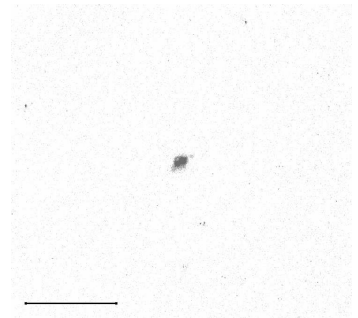
DEC: 75200.0



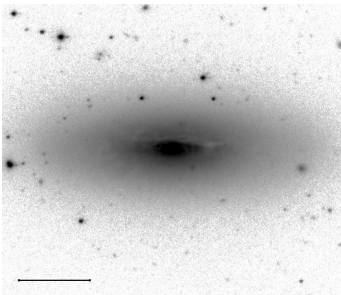
RA: 111927.6



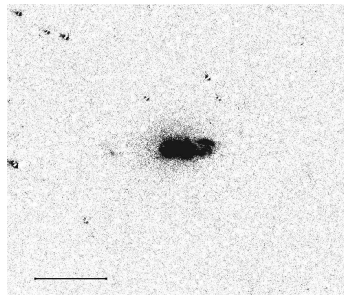
DEC: 93605.0



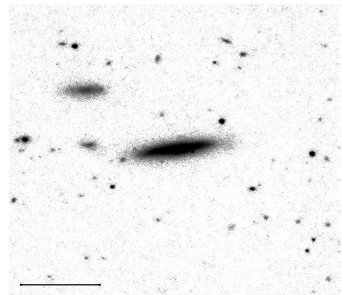
RA: 111435.8



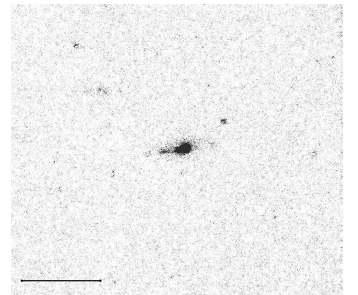
DEC: 124900.0



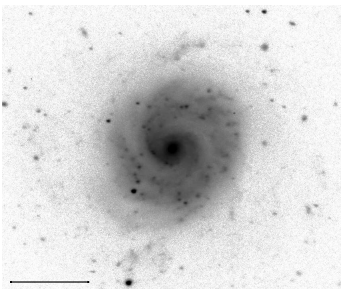
RA: 112217.4



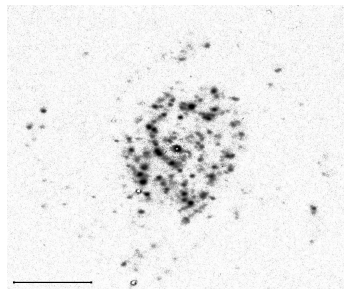
DEC: 130400.0



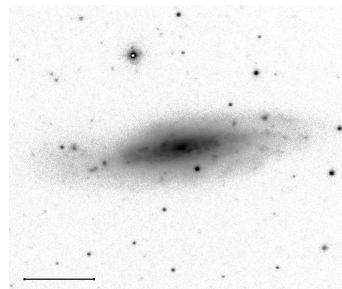
RA: 111505.5



DEC: 144714.0



RA: 112426.5



DEC: 112043.0

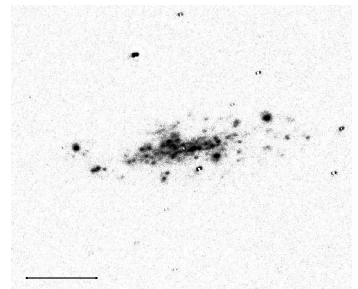
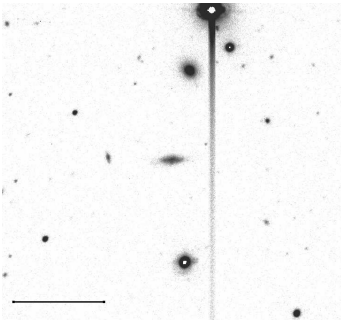
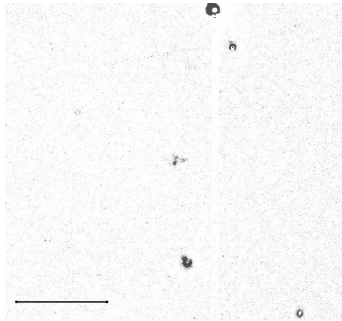


Figure 9: continue

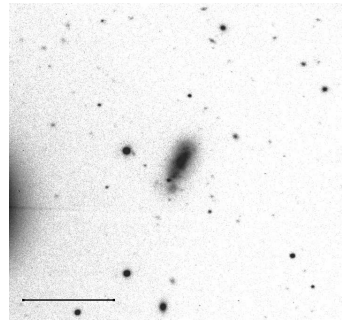
RA: 112505.7



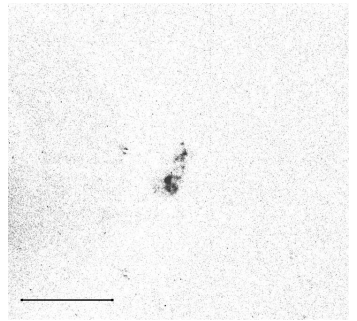
DEC: 40709.0



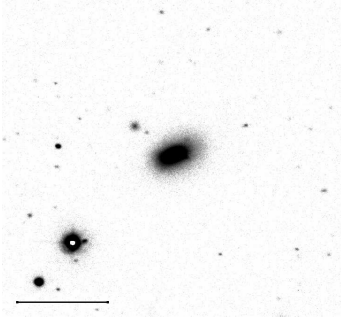
RA: 113419.2



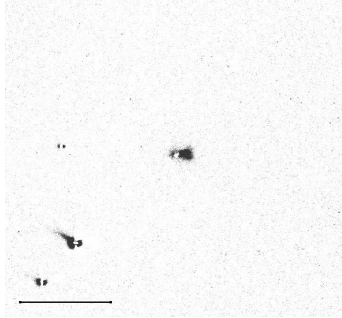
DEC: 131934.0



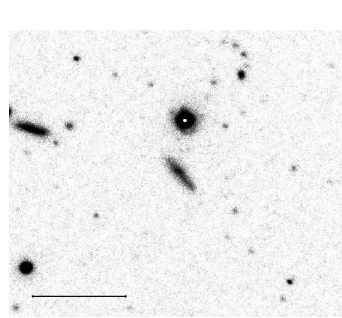
RA: 112553.4



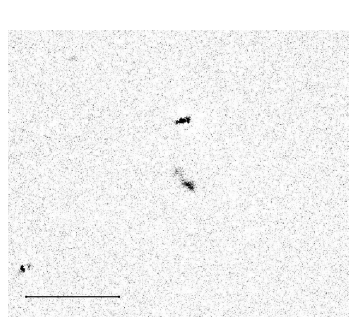
DEC: 95913.0



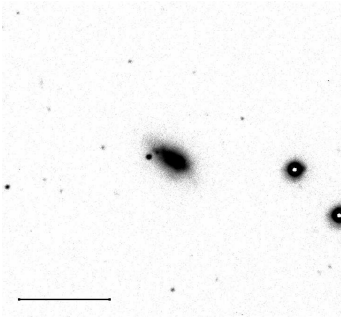
RA: 113707.4



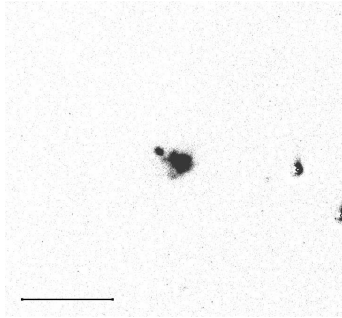
DEC: 131512.0



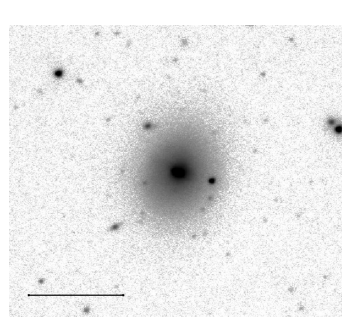
RA: 112710.3



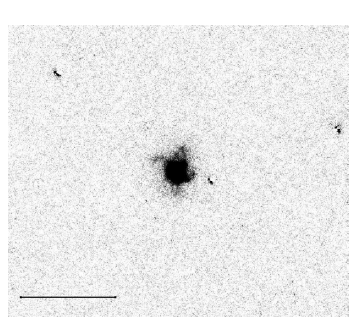
DEC: 84347.0



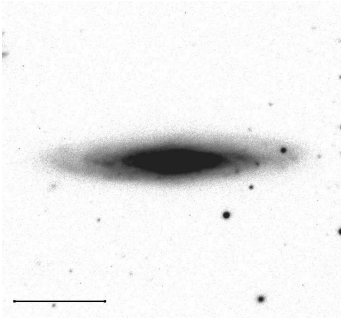
RA: 113812.8



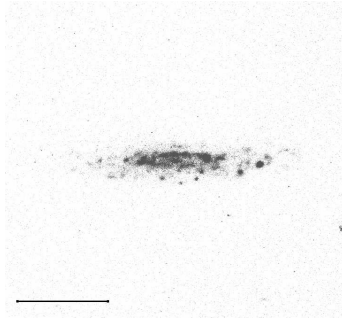
DEC: 120653.0



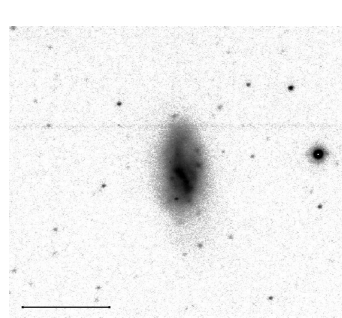
RA: 112823.2



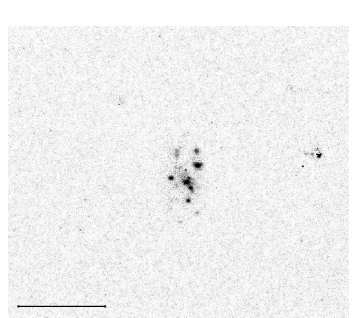
DEC: 92447.0



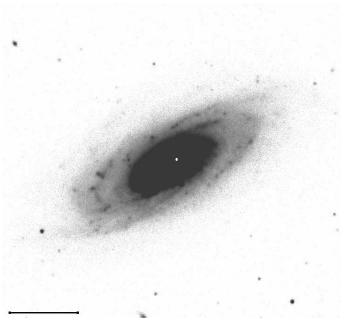
RA: 113952.0



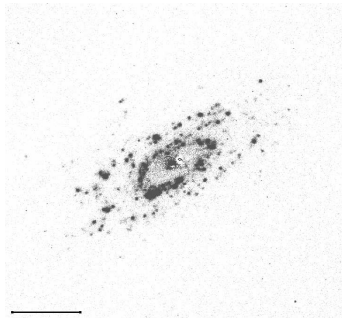
DEC: 85222.0



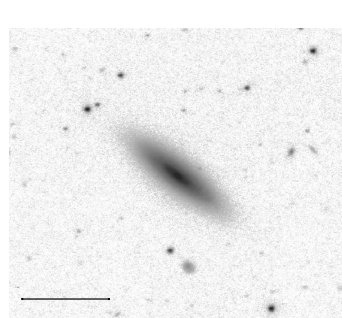
RA: 113008.1



DEC: 91633.0



RA: 114018.7



DEC: 90041.0

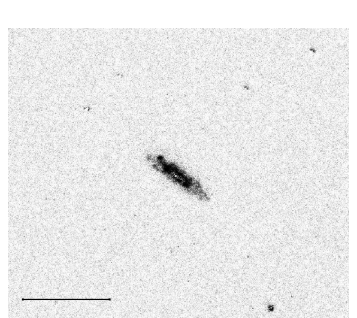
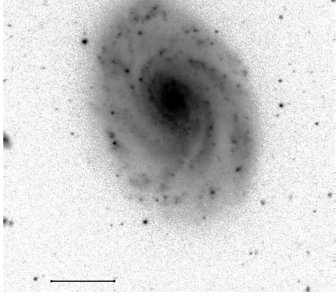
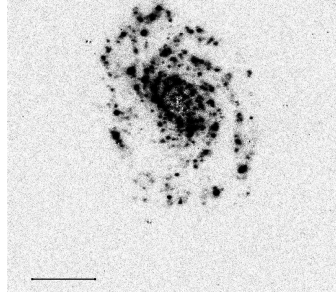


Figure 9: continue

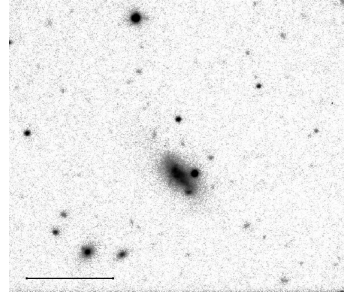
RA: 114058.2



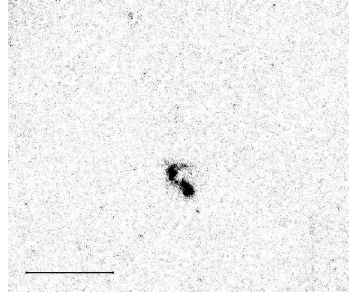
DEC: 112830.0



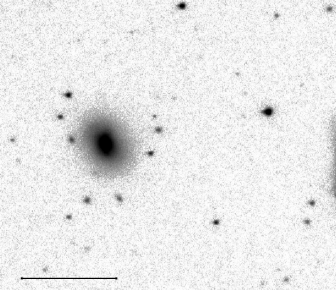
RA: 115054.2



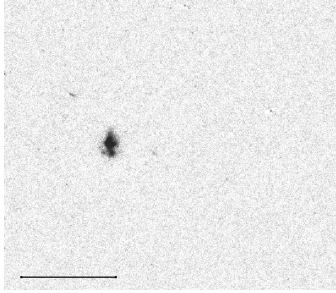
DEC: 143545.0



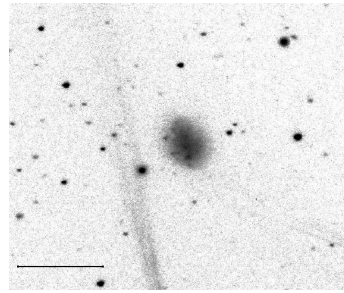
RA: 114150.7



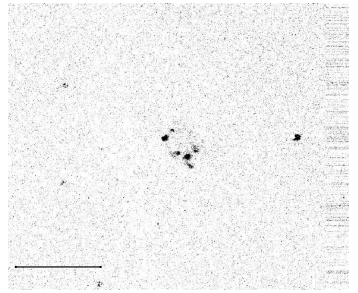
DEC: 155844.0



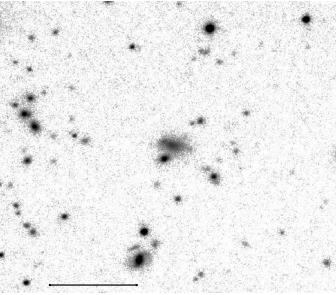
RA: 115202.0



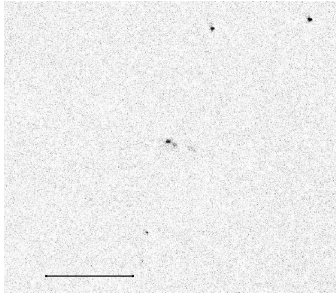
DEC: 135250.0



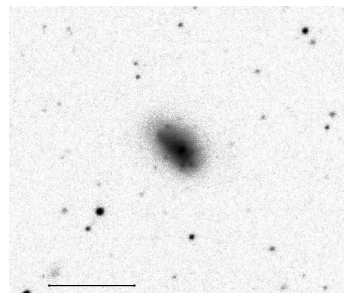
RA: 114443.6



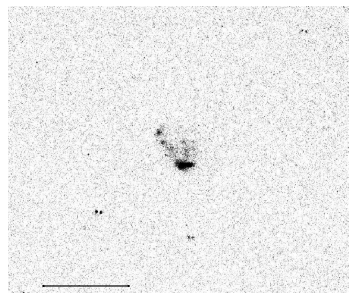
DEC: 111208.0



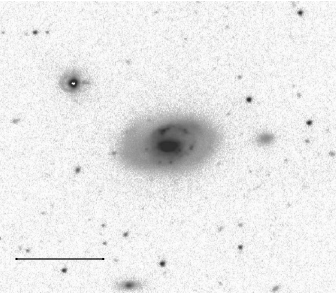
RA: 115933.3



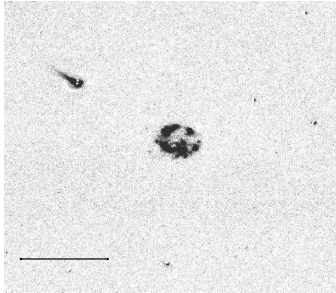
DEC: 135308.0



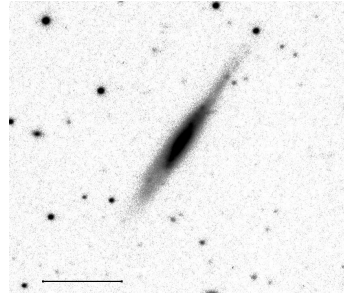
RA: 114525.6



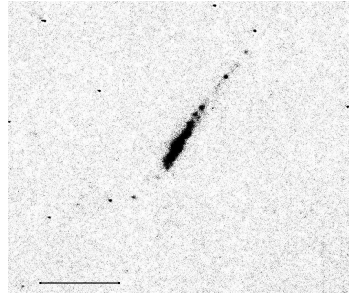
DEC: 90953.0



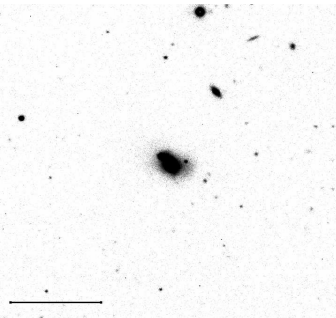
RA: 120109.8



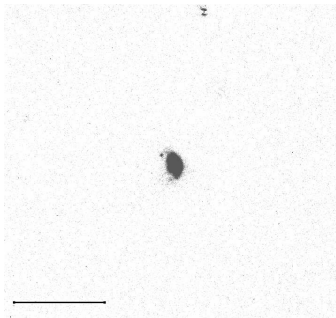
DEC: 140637.0



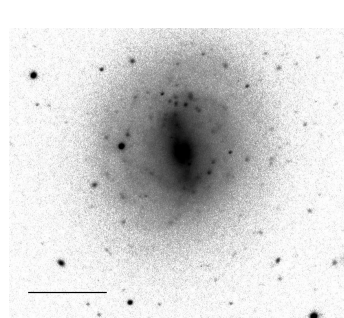
RA: 115002.2



DEC: 150142.0



RA: 120123.9



DEC: 132422.0

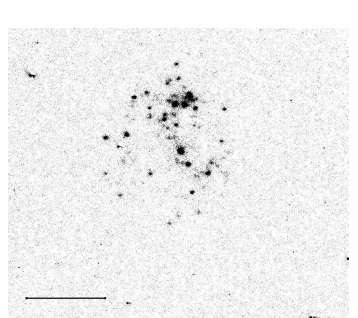
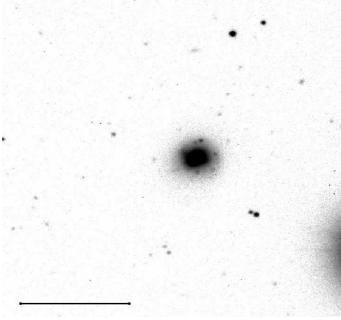
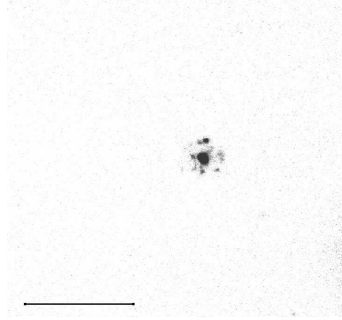


Figure 9: continue

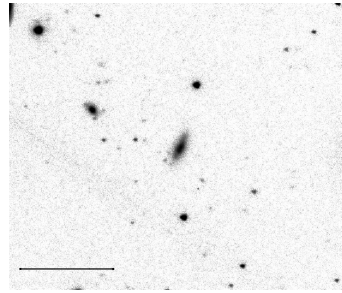
RA: 120126.8



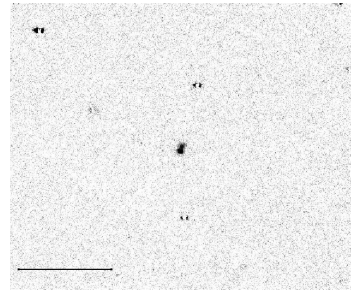
DEC: 140238.0



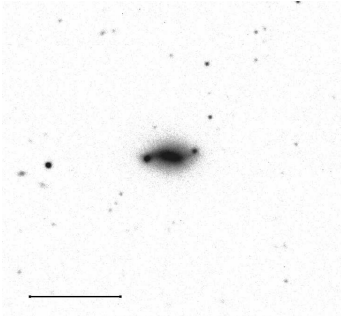
RA: 121726.8



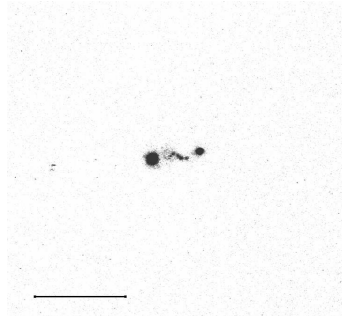
DEC: 125557.0



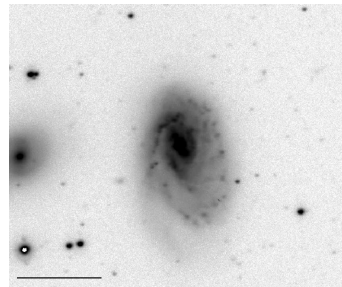
RA: 120144.5



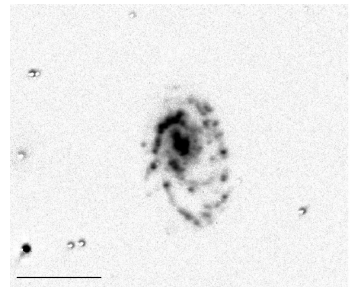
DEC: 54910.0



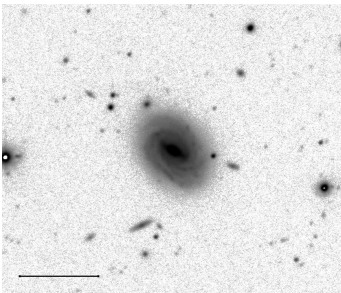
RA: 121956.0



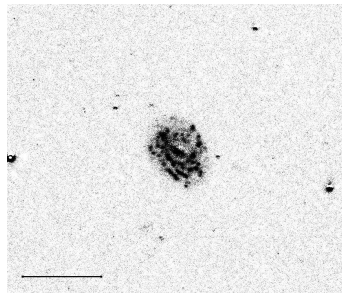
DEC: 52030.0



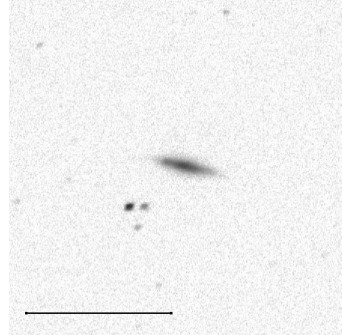
RA: 120411.2



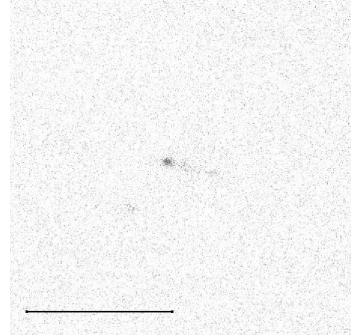
DEC: 105110.0



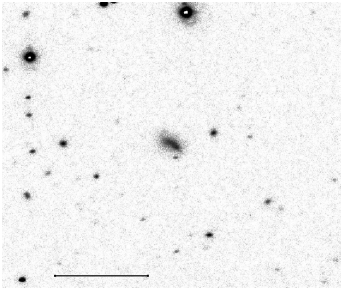
RA: 122318.0



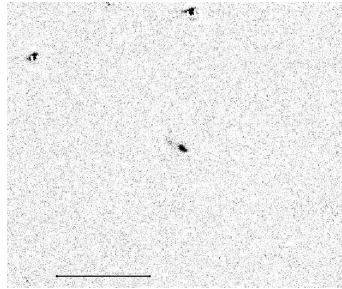
DEC: 53626.0



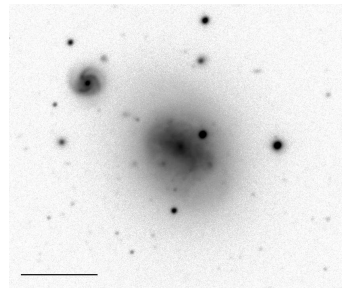
RA: 121309.8



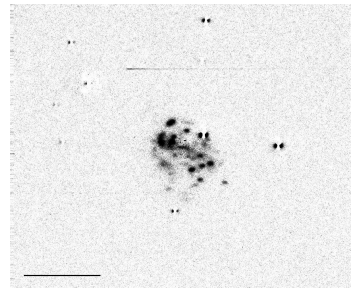
DEC: 133439.0



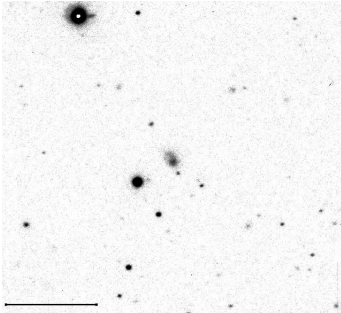
RA: 123449.1



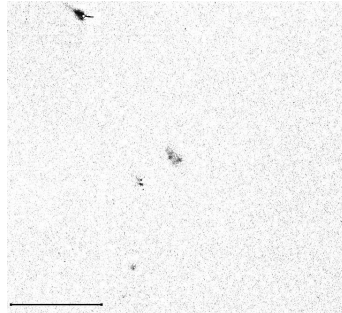
DEC: 153253.0



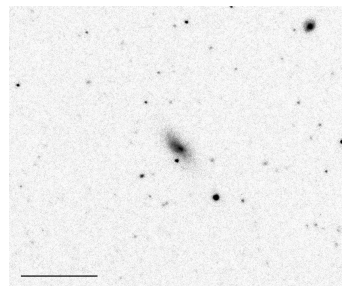
RA: 121627.7



DEC: 60307.0



RA: 124119.3



DEC: 63135.0

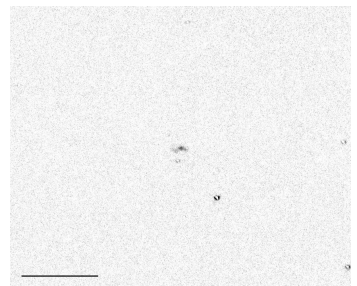
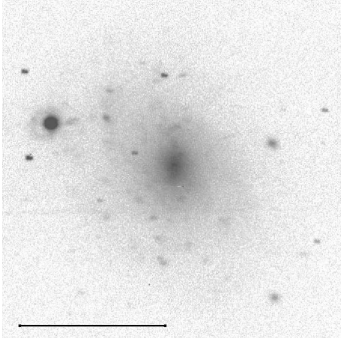
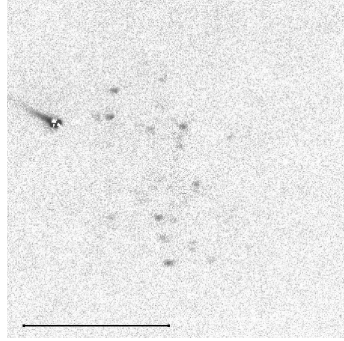


Figure 9: continue

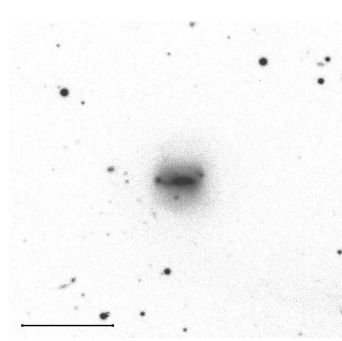
RA: 124645.7



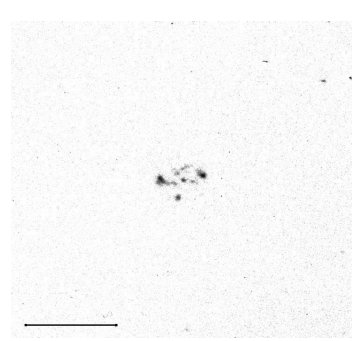
DEC: 55715.0



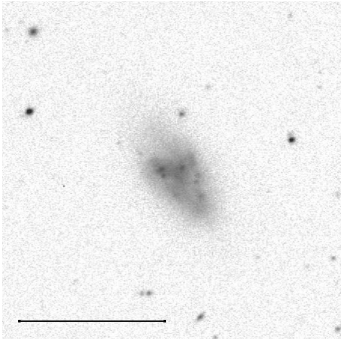
RA: 125523.6



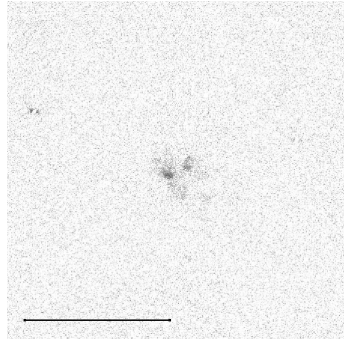
DEC: 75452.0



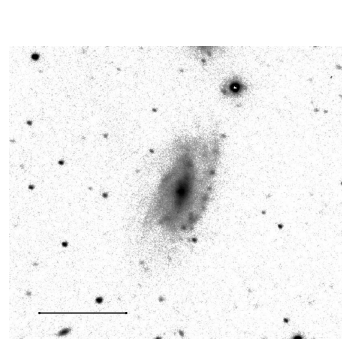
RA: 124759.7



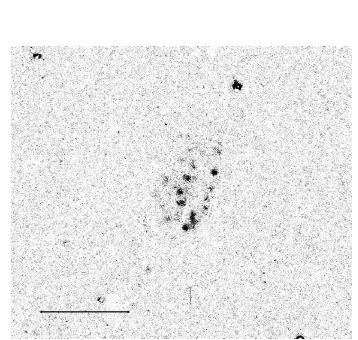
DEC: 42630.0



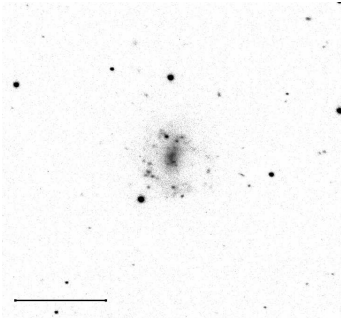
RA: 125620.3



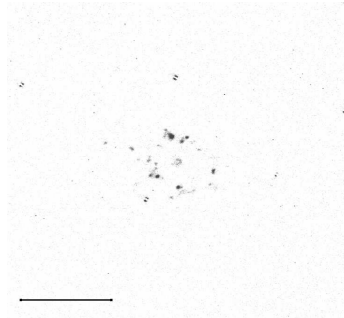
DEC: 101107.0



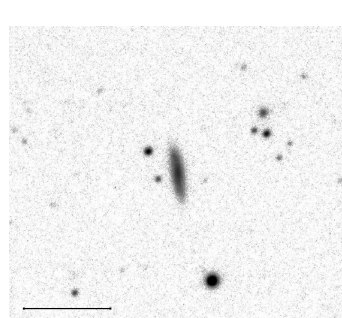
RA: 124915.8



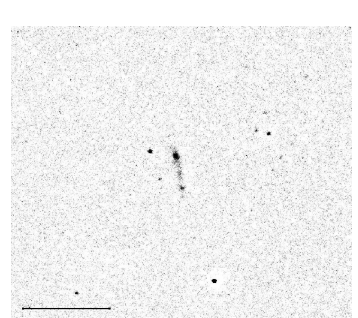
DEC: 43934.0



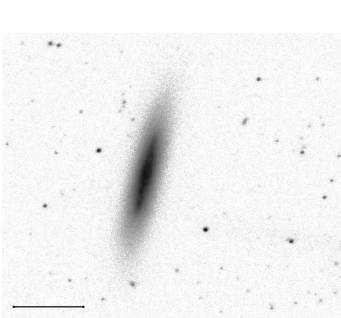
RA: 125655.2



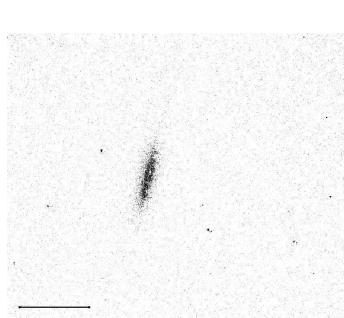
DEC: 80923.0



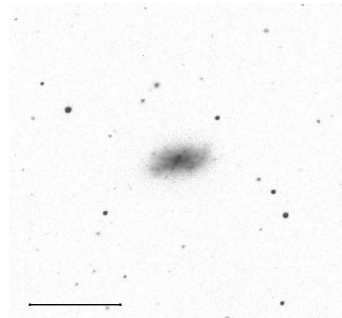
RA: 125443.2



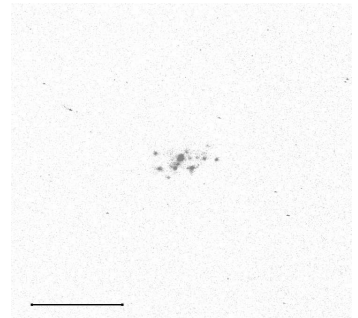
DEC: 131433.0



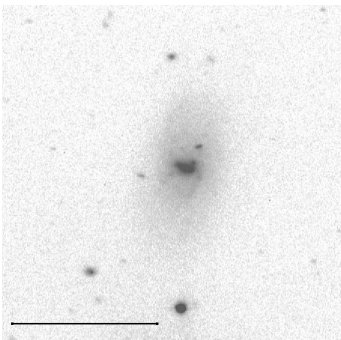
RA: 125655.9



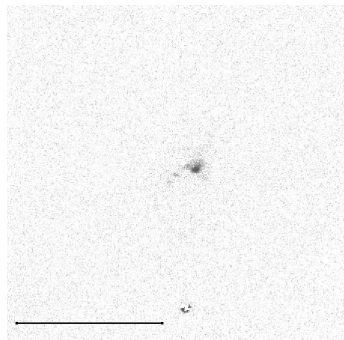
DEC: 40343.0



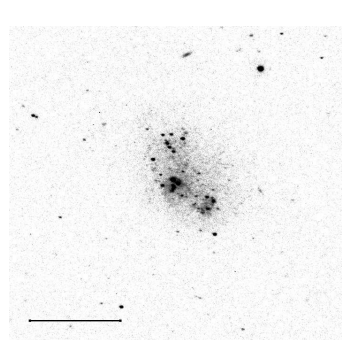
RA: 125510.2



DEC: 75526.0



RA: 125840.4



DEC: 141300.0

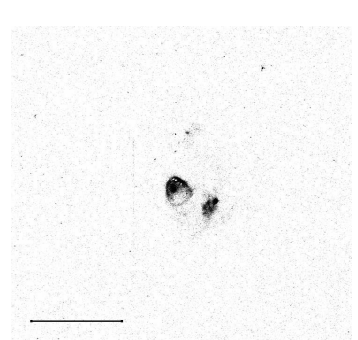
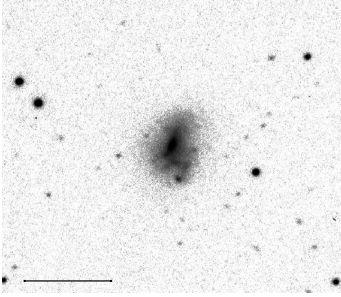
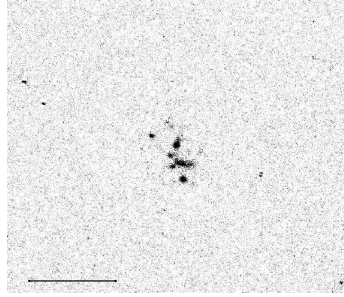


Figure 9: continue

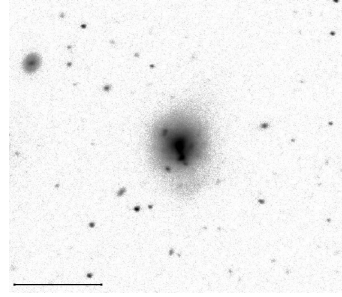
RA: 125852.3



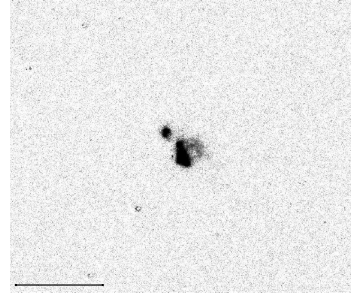
DEC: 130830.0



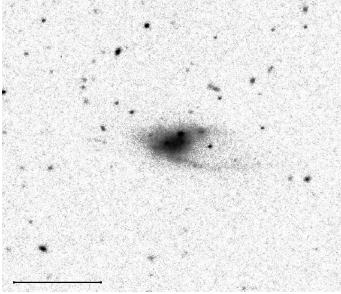
RA: 131652.5



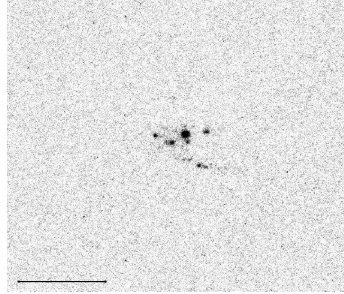
DEC: 123300.0



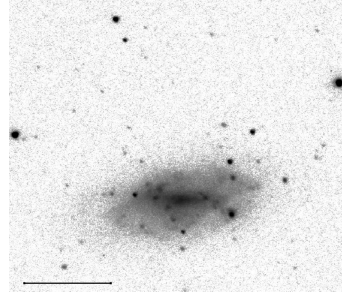
RA: 130024.0



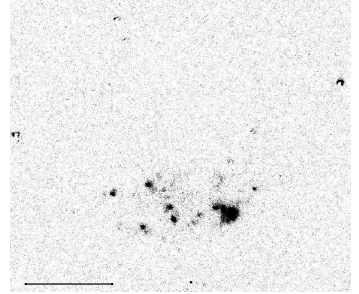
DEC: 134017.0



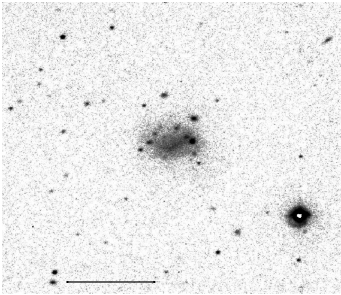
RA: 132037.5



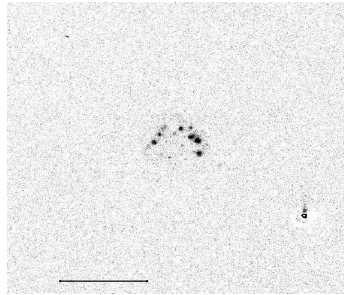
DEC: 94730.0



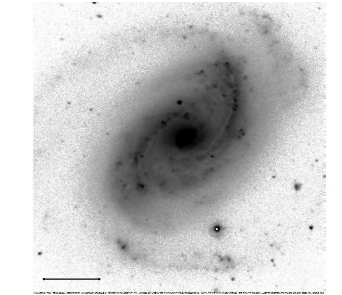
RA: 130623.6



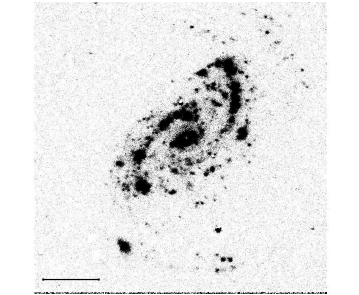
DEC: 102558.0



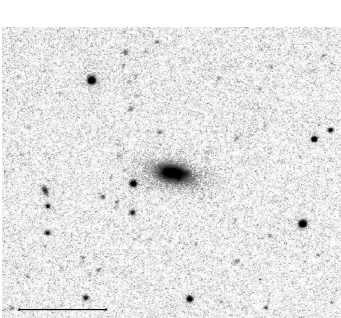
RA: 133732.1



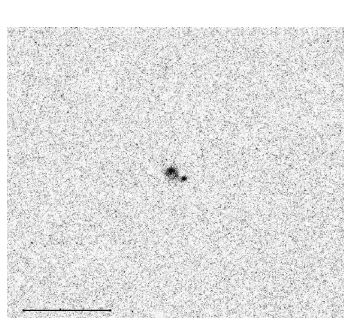
DEC: 85312.0



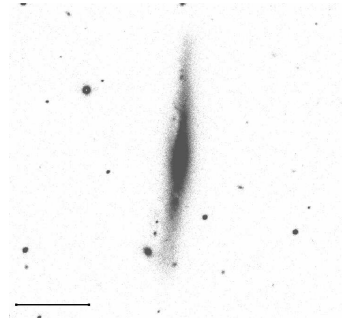
RA: 130656.1



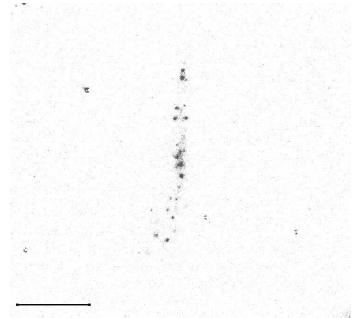
DEC: 144853.0



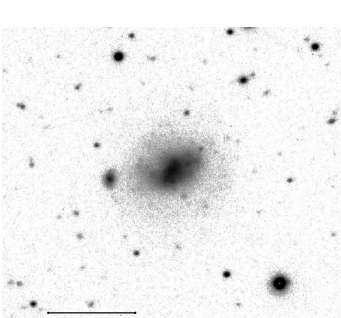
RA: 135412.0



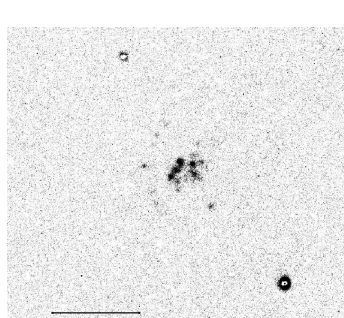
DEC: 51334.0



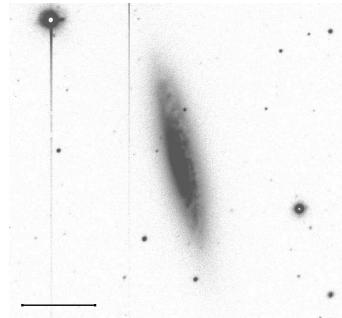
RA: 131320.6



DEC: 101153.0



RA: 135458.1



DEC: 52008.0

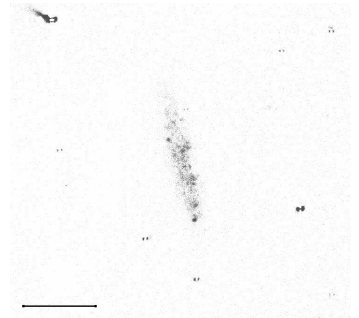
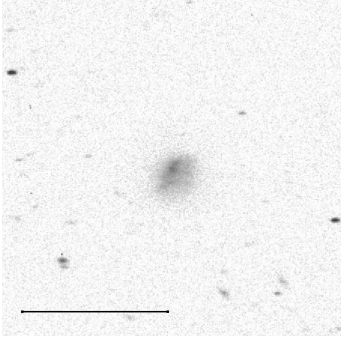
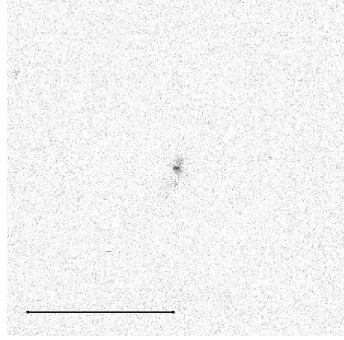


Figure 9: continue

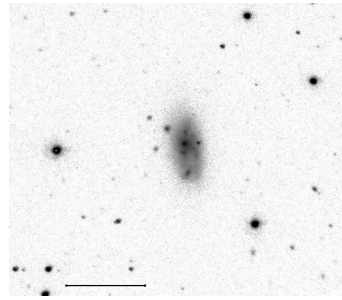
RA: 135503.6



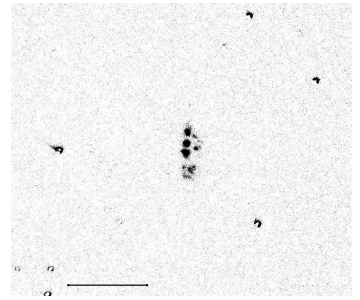
DEC: 51108.0



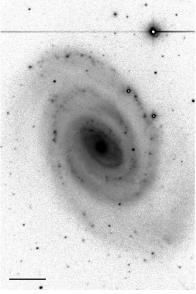
RA: 142810.3



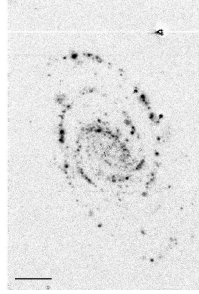
DEC: 133318.0



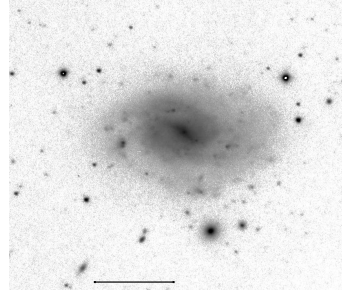
RA: 135611.2



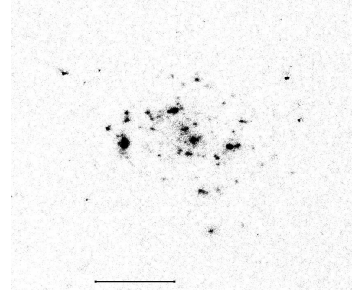
DEC: 50046.0



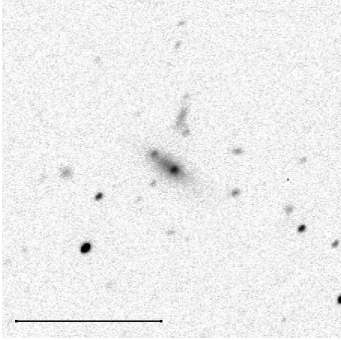
RA: 142817.6



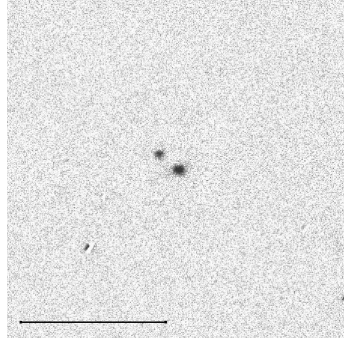
DEC: 134700.0



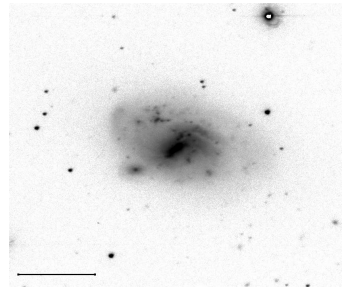
RA: 140704.7



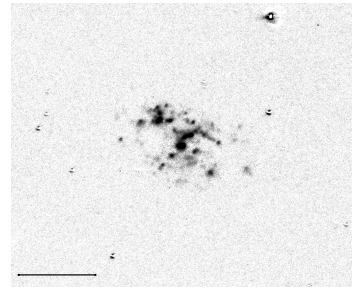
DEC: 104251.0



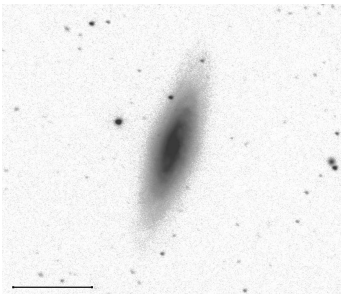
RA: 143039.5



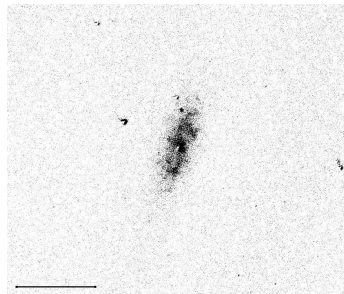
DEC: 71621.0



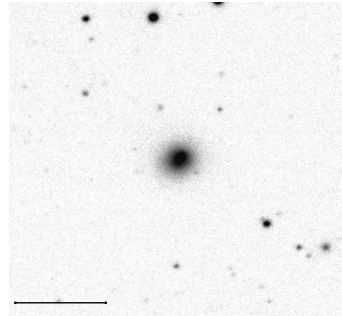
RA: 142209.7



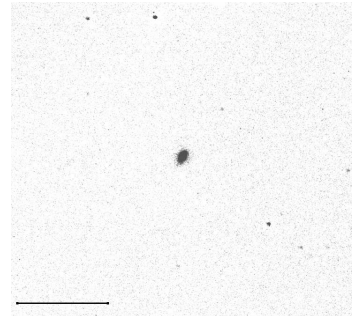
DEC: 135520.0



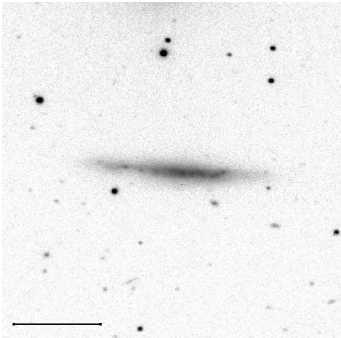
RA: 143222.2



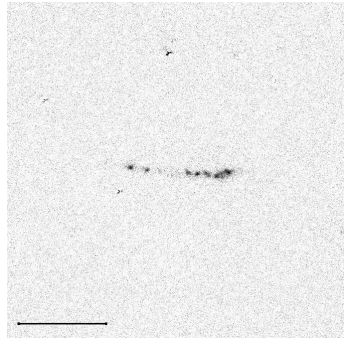
DEC: 95600.0



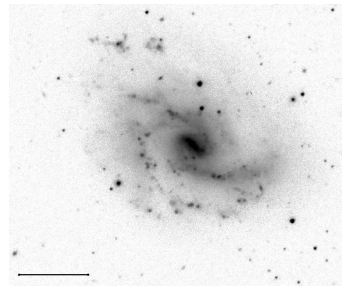
RA: 142659.3



DEC: 84113.0



RA: 143243.9



DEC: 95354.0

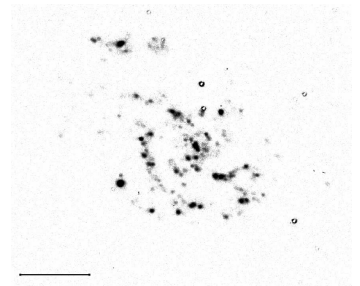
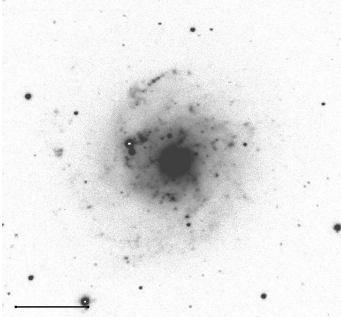


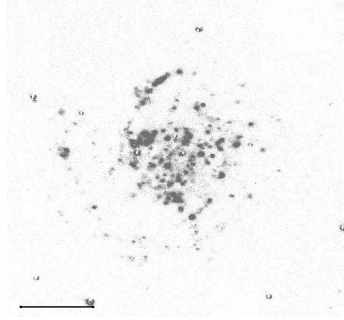
Figure 9: continue



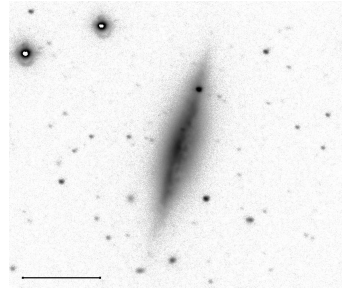
RA: 143325.0



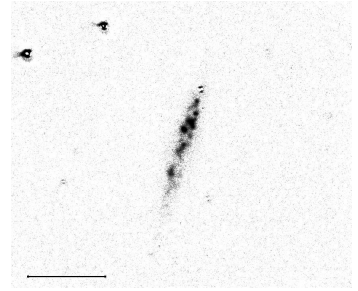
DEC: 42713.0



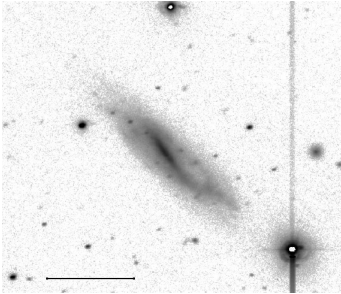
RA: 144258.6



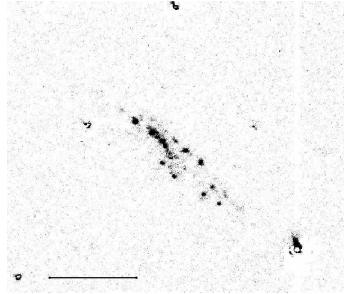
DEC: 45338.0



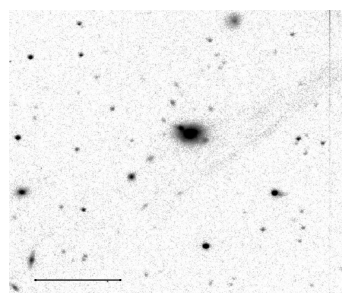
RA: 143532.2



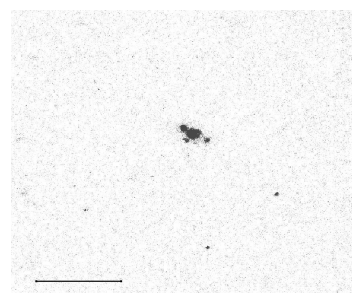
DEC: 125442.0



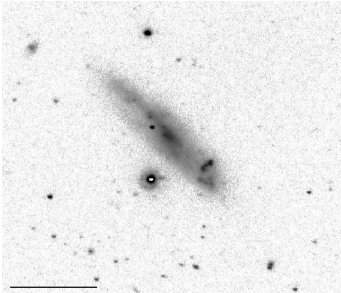
RA: 144728.5



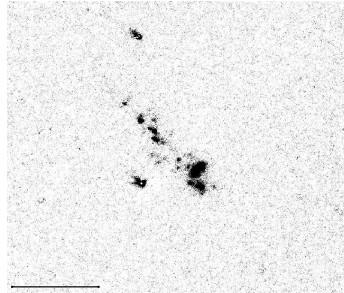
DEC: 124557.0



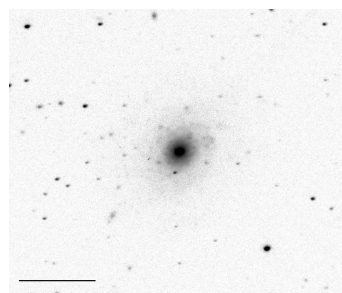
RA: 143539.1



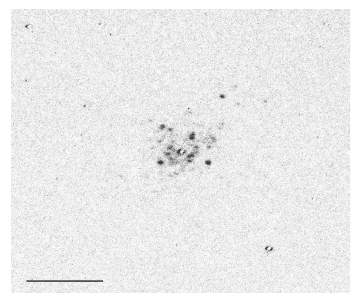
DEC: 131006.0



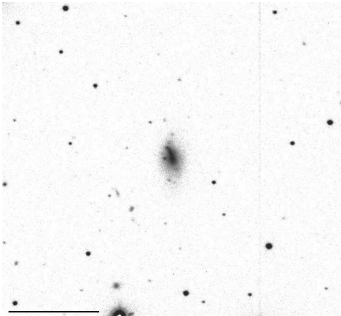
RA: 144842.6



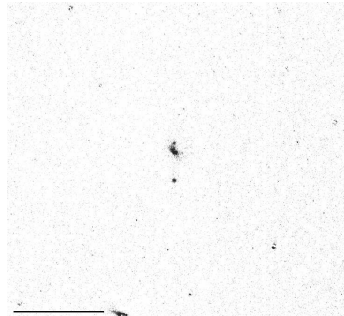
DEC: 122737.0



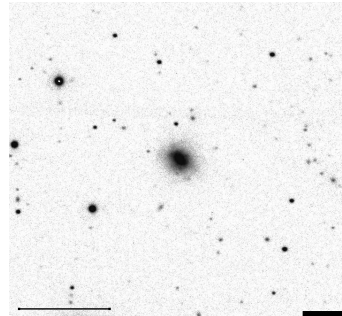
RA: 143912.4



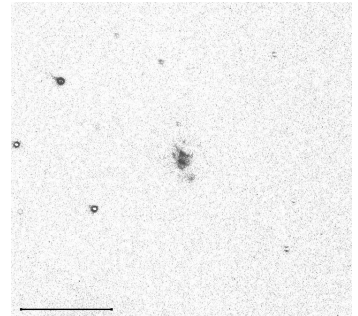
DEC: 90800.0



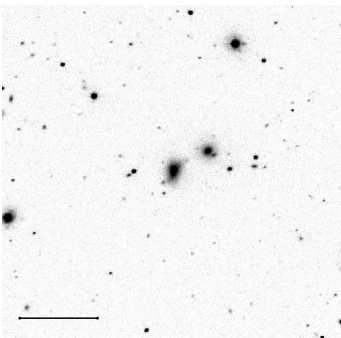
RA: 145838.1



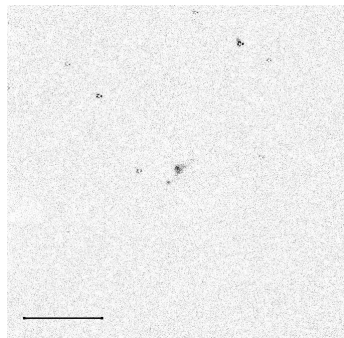
DEC: 64641.0



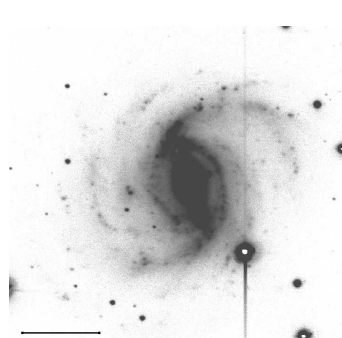
RA: 144120.8



DEC: 74730.0



RA: 152157.5



DEC: 50430.0

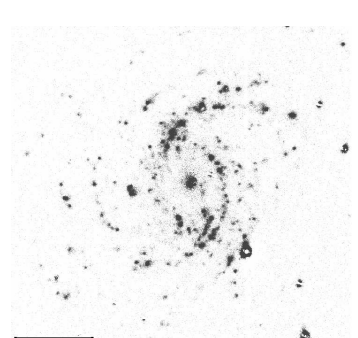
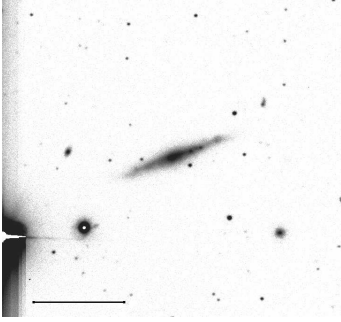
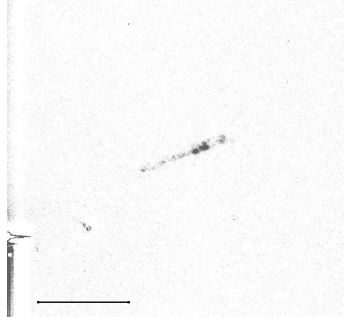


Figure 9: continue

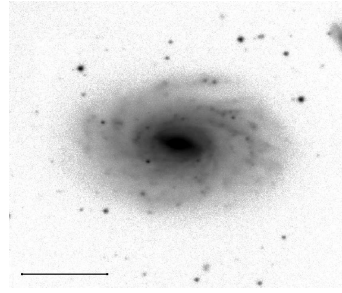
RA: 152605.4



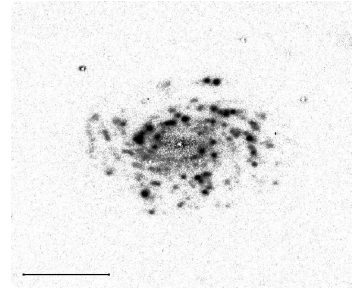
DEC: 91221.0



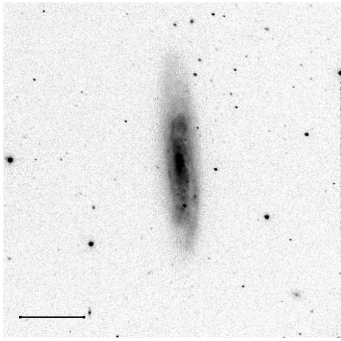
RA: 153829.7



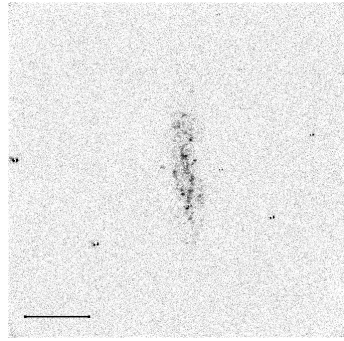
DEC: 121130.0



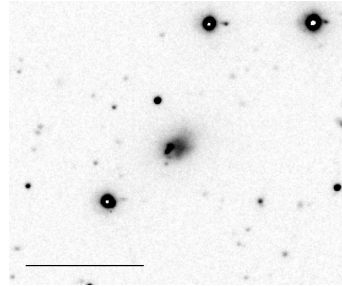
RA: 153343.1



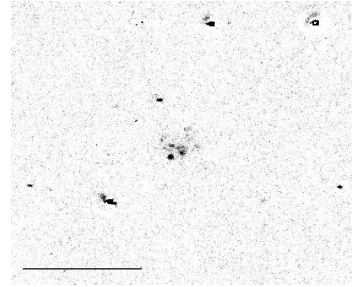
DEC: 150054.0



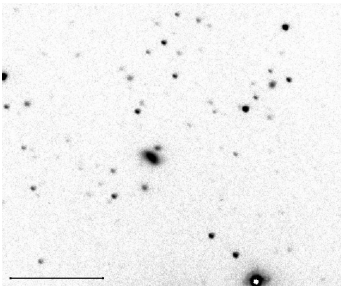
RA: 153856.7



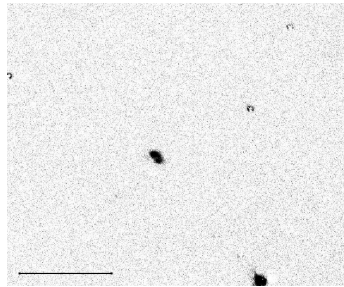
DEC: 123308.0



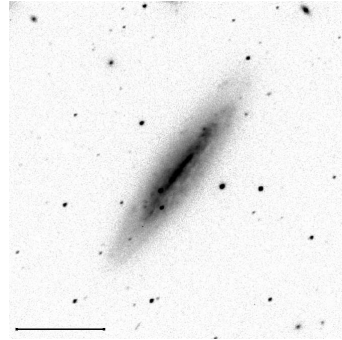
RA: 153445.2



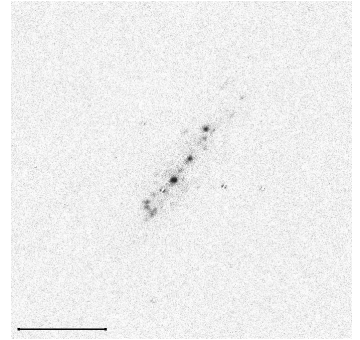
DEC: 122655.0



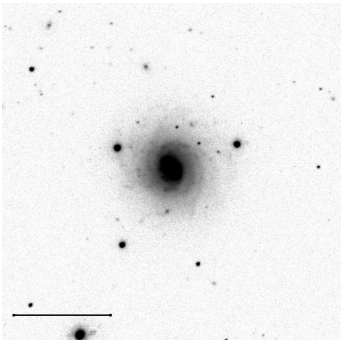
RA: 154253.0



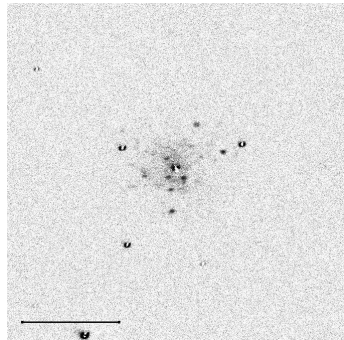
DEC: 141351.0



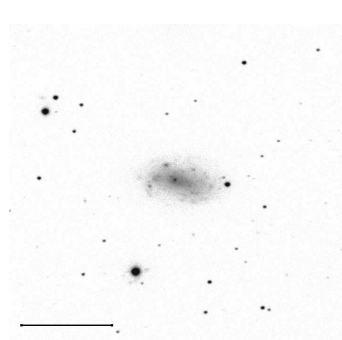
RA: 153458.6



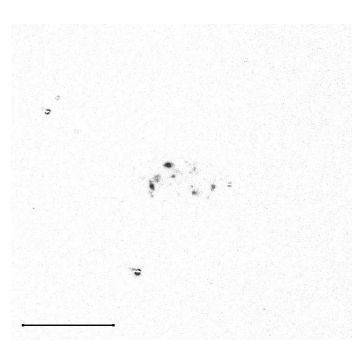
DEC: 114515.0



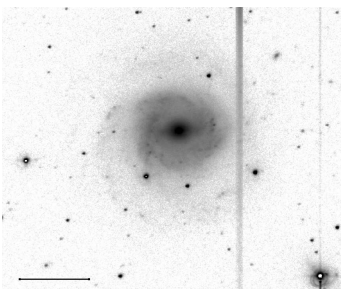
RA: 154610.7



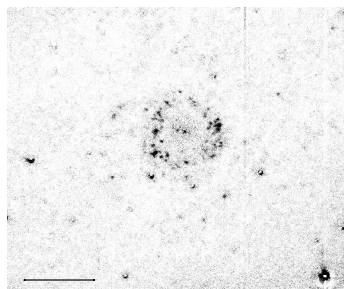
DEC: 65353.0



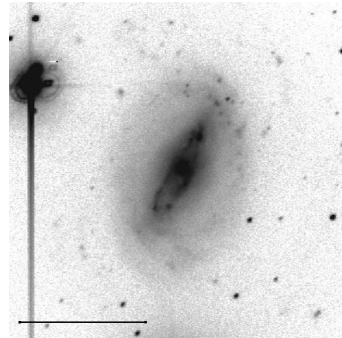
RA: 153522.9



DEC: 120300.0



RA: 155414.0



DEC: 143604.0

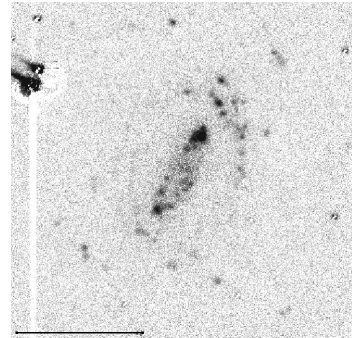
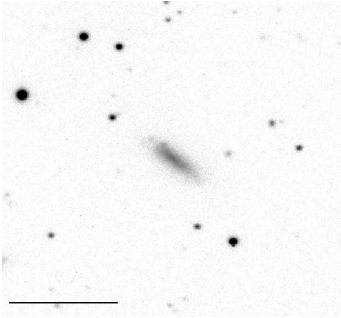
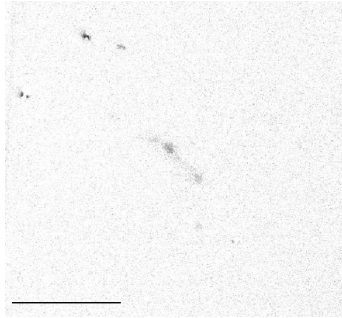


Figure 9: continue

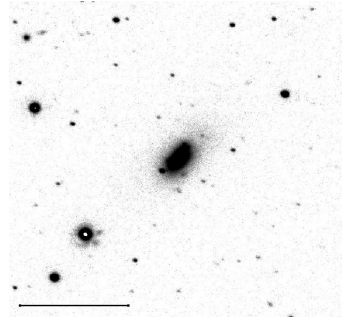
RA: 160602.2



DEC: 83024



RA: 160641.0



DEC: 63451.0

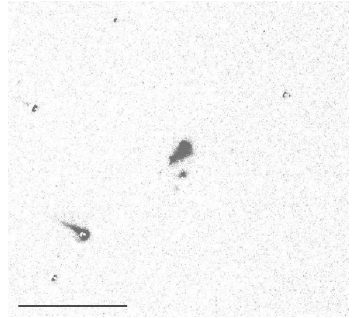


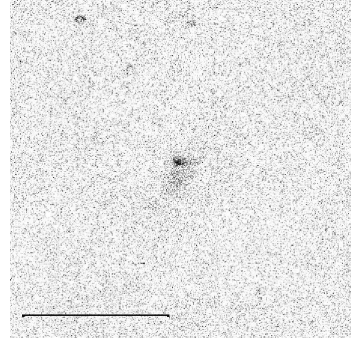
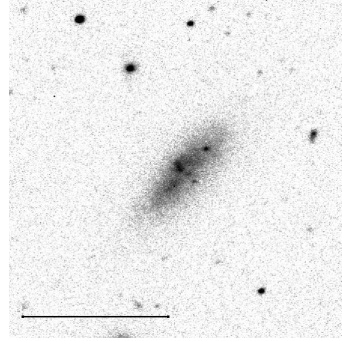
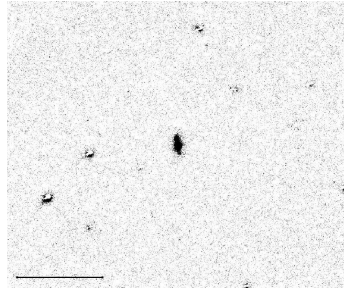
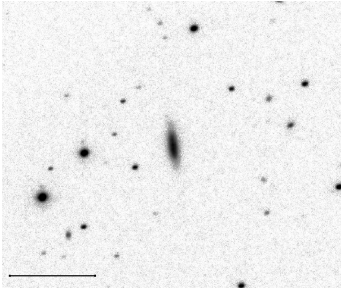
Figure 9: continue

RA: 100610.8

DEC: 110602.0

RA: 110426.3

DEC: 114521.0

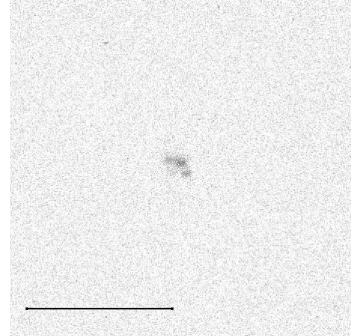
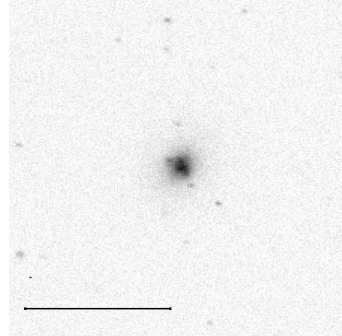
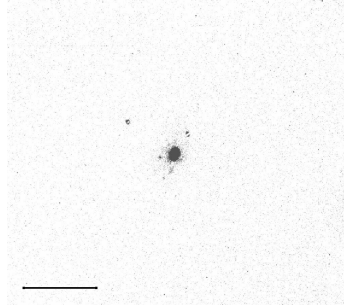
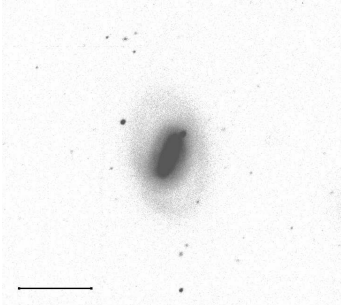


RA: 111241.0

DEC: 90403.0

RA: 111355.0

DEC: 40603.0

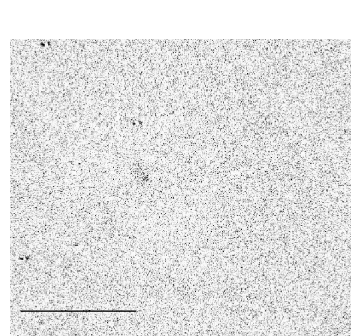
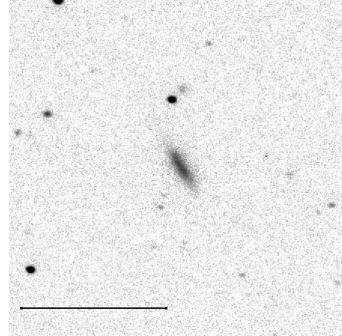
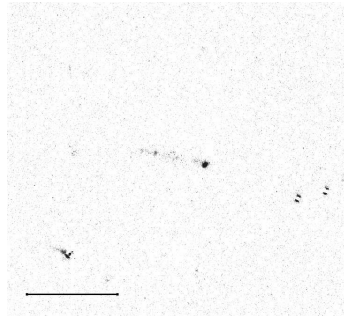
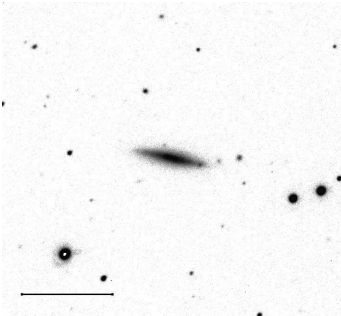


RA: 111627.9

DEC: 42021.0

RA: 111702.0

DEC: 100900.0

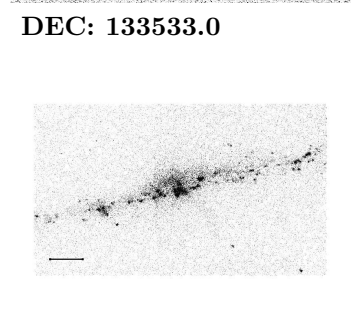
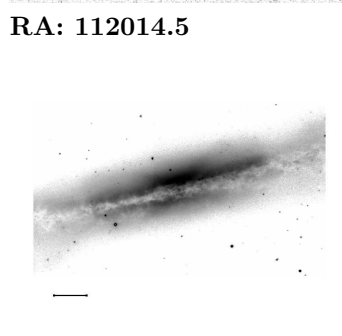
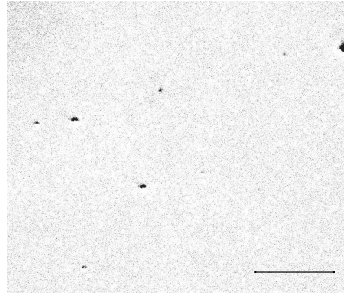
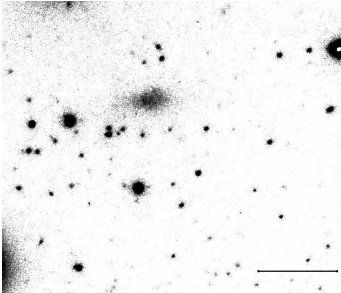


RA: 111913.4

DEC: 115707.0

RA: 112014.5

DEC: 133533.0



RA: 112250.8

DEC: 122056.0

RA: 112444.5

DEC: 151655.0

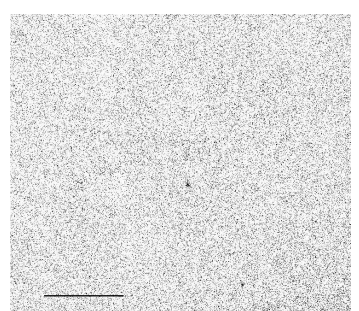
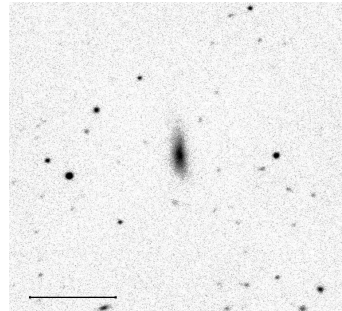
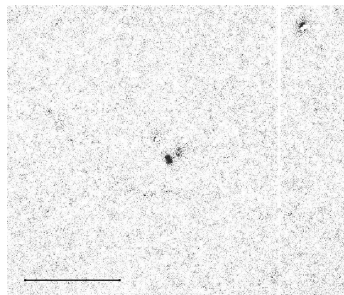
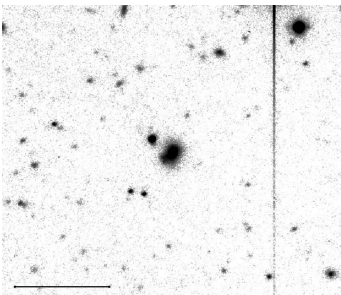
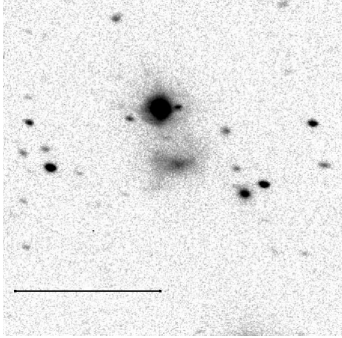
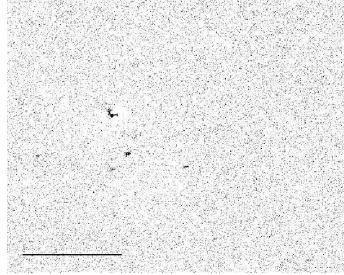


Figure 10: Atlas of 84 marginal detections ( $<2\sigma$ ) or with complex unresolved  $H\alpha$  emission, identified by their celestial coordinates (2 objects per line). The OFF-band (left panel), the NET frame (right panel) are given. A 1 arcmin bar is given on all images

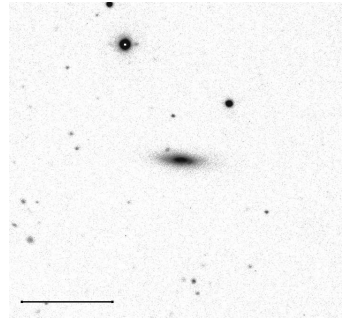
RA: 112824.5



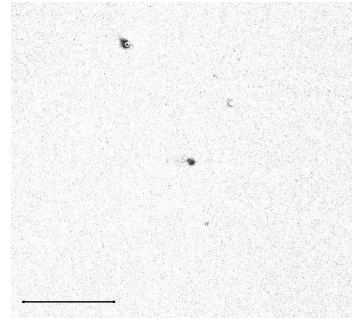
DEC: 60708.0



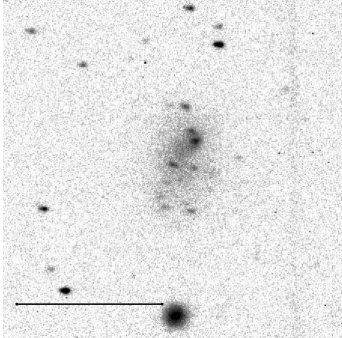
RA: 113202.1



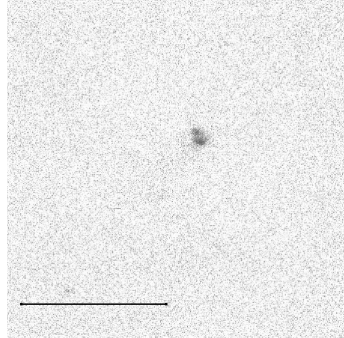
DEC: 143700.0



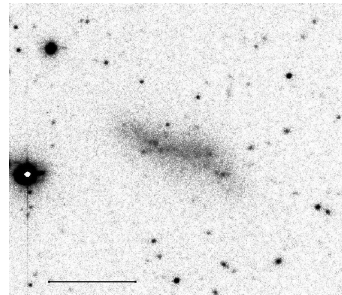
RA: 113454.7



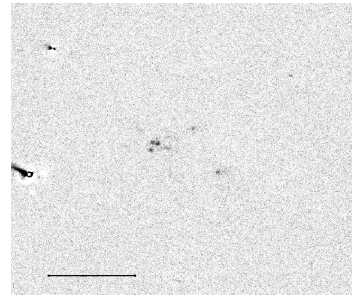
DEC: 110135.0



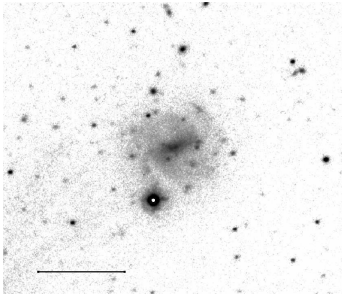
RA: 114216.7



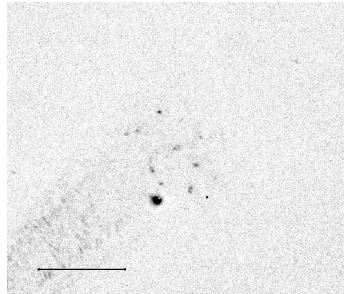
DEC: 150000.0



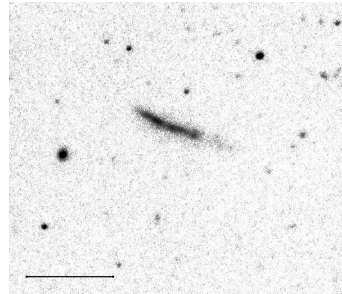
RA: 114445.6



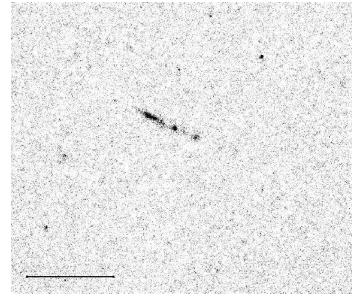
DEC: 91247.0



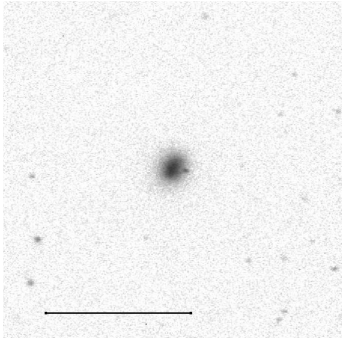
RA: 114622.6



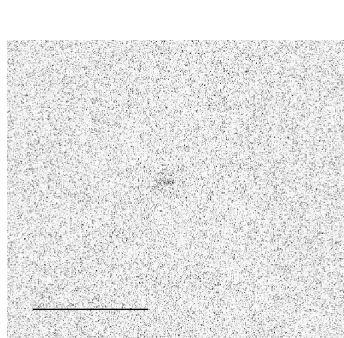
DEC: 134944.0



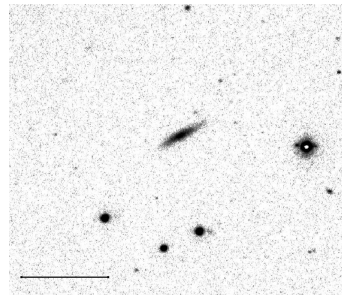
RA: 120300.9



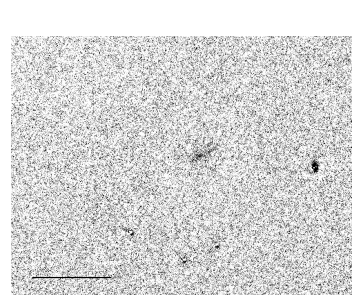
DEC: 63030.0



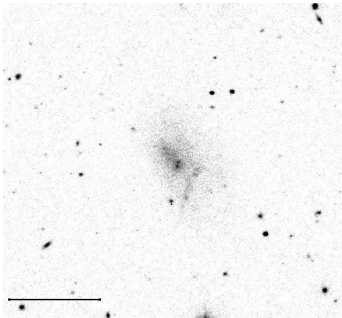
RA: 120314.5



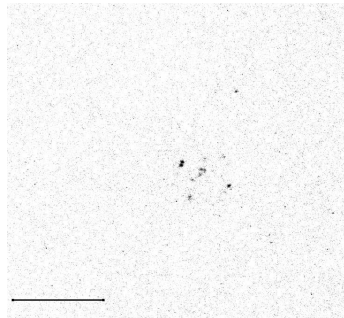
DEC: 100615.0



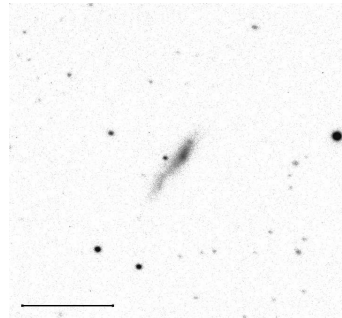
RA: 120350.4



DEC: 143319.0



RA: 120404.5



DEC: 44848.0

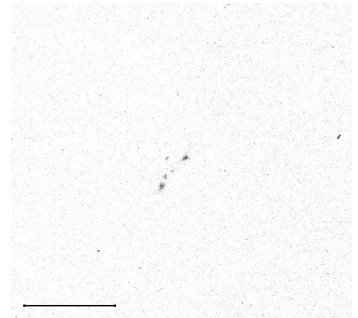
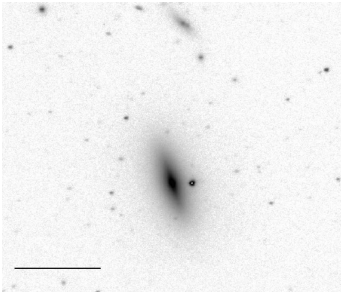
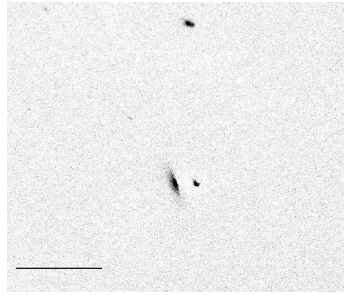


Figure 10: continue

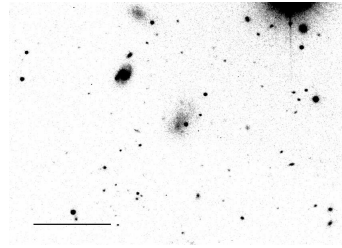
RA: 120445.8



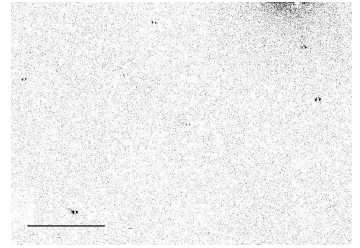
DEC: 103742.0



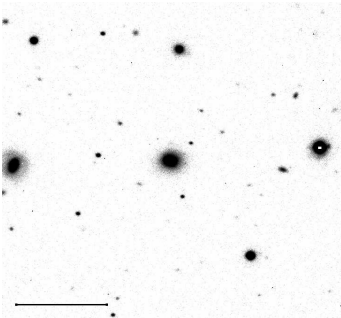
RA: 120830.9



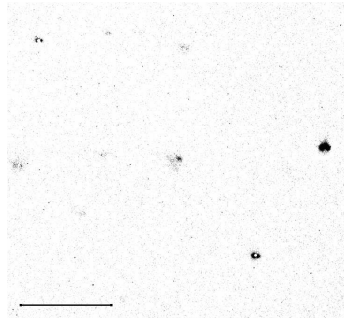
DEC: 150600.0



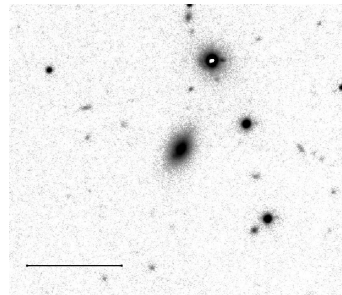
RA: 121023.9



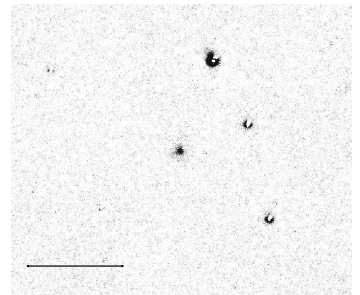
DEC: 131008.0



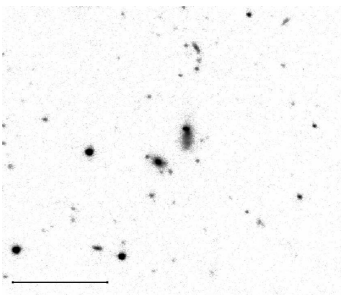
RA: 121034.4



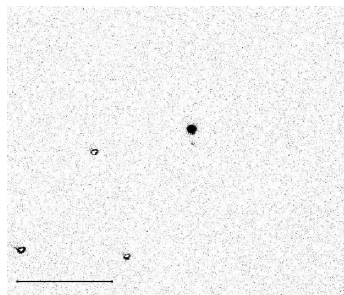
DEC: 114542.0



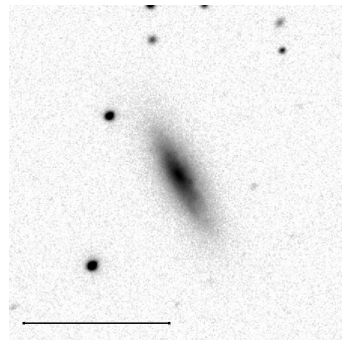
RA: 121037.9



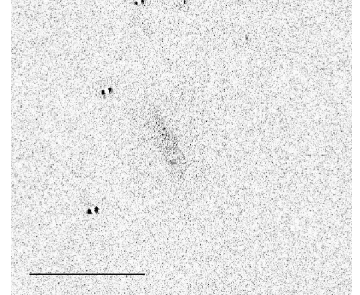
DEC: 130130.0



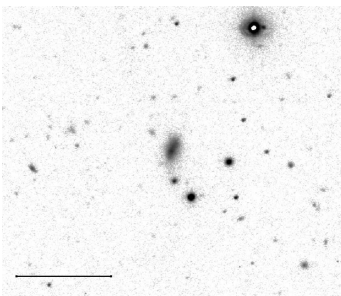
RA: 121401.7



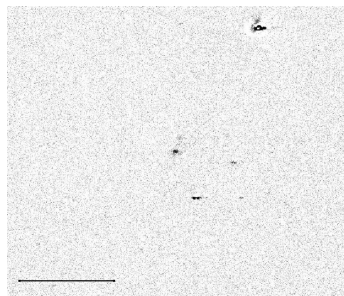
DEC: 64330.0



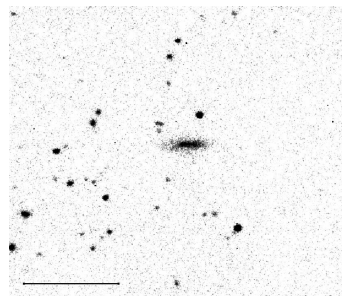
RA: 121411.4



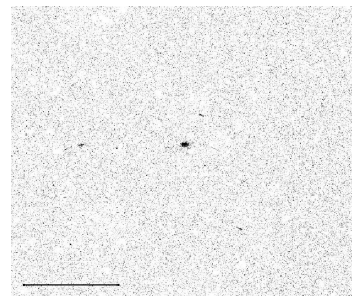
DEC: 124730.0



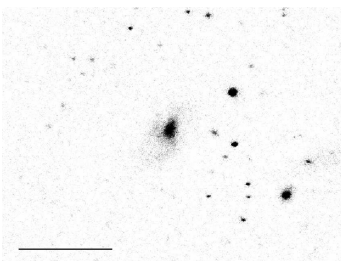
RA: 121413.6



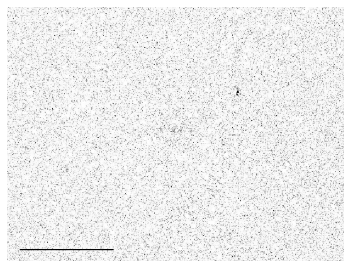
DEC: 85430.0



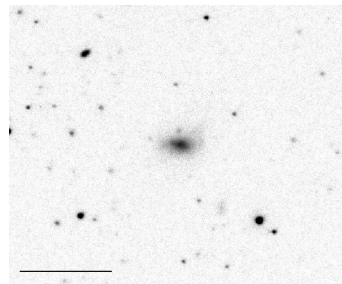
RA: 121431.9



DEC: 120600.0



RA: 121435.6



DEC: 91208.0

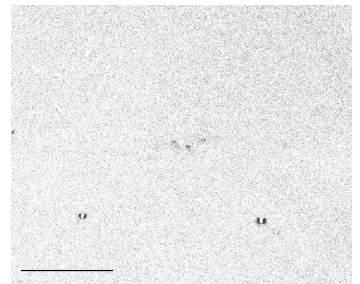
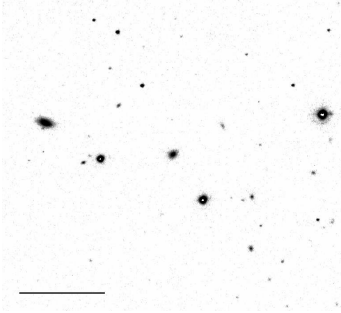
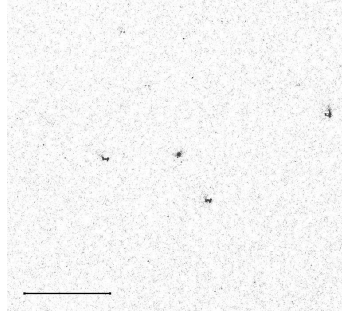


Figure 10: continue

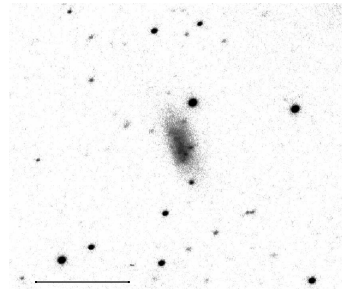
RA: 121634.1



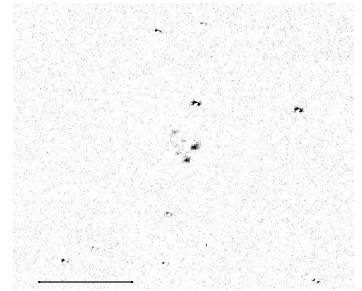
DEC: 101243.0



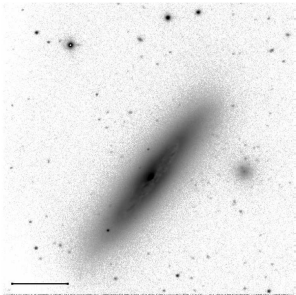
RA: 121910.9



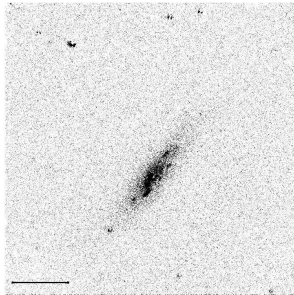
DEC: 125322.0



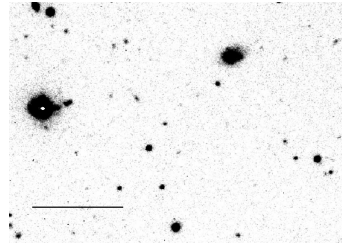
RA: 122238.5



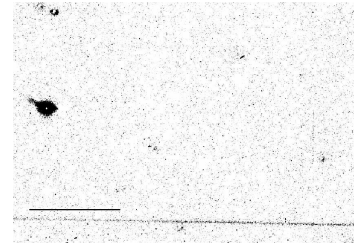
DEC: 114824.0



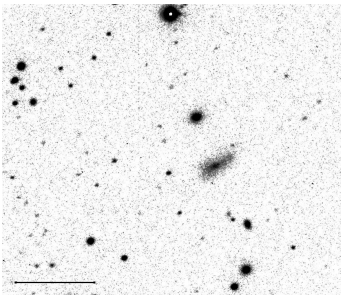
RA: 122404.6



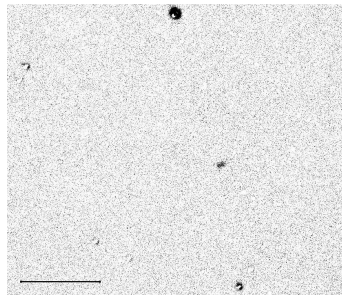
DEC: 81742.0



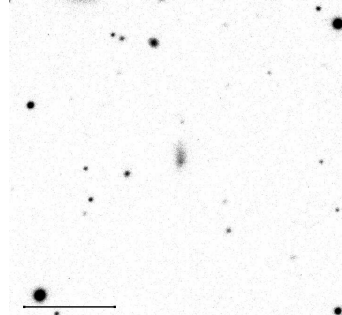
RA: 122658.5



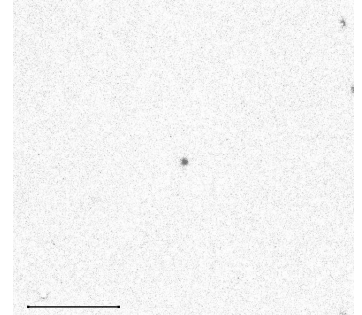
DEC: 95314.0



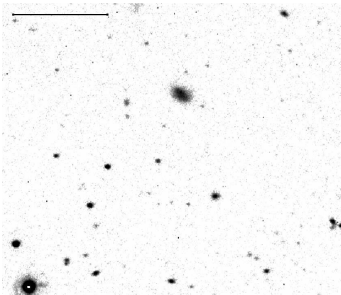
RA: 122713.7



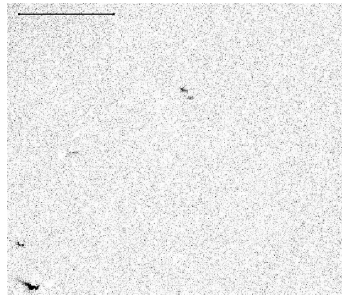
DEC: 73818.0



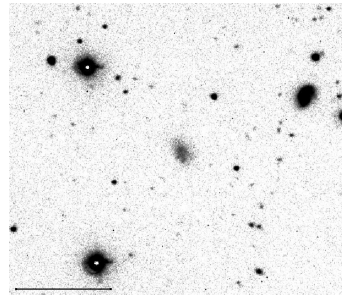
RA: 122930.3



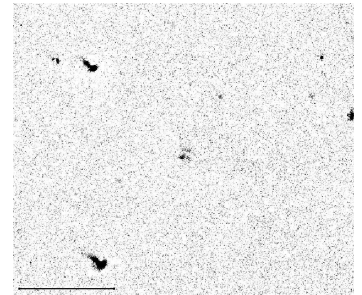
DEC: 131150.0



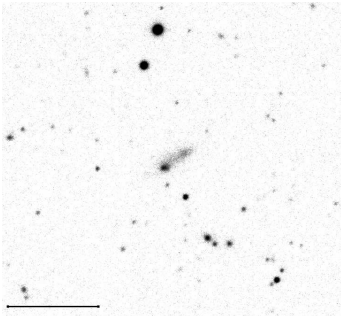
RA: 123856.1



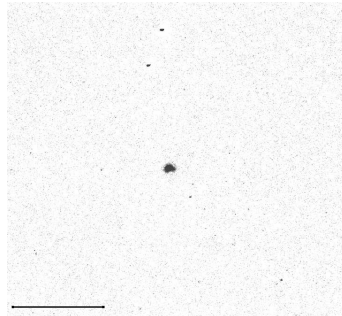
DEC: 133307.0



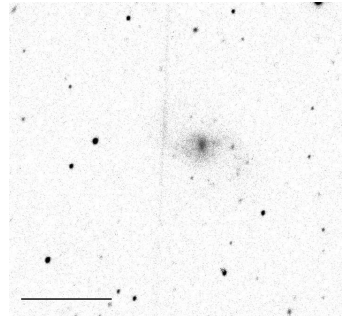
RA: 124602.1



DEC: 42252.0



RA: 124925.7



DEC: 42320.0

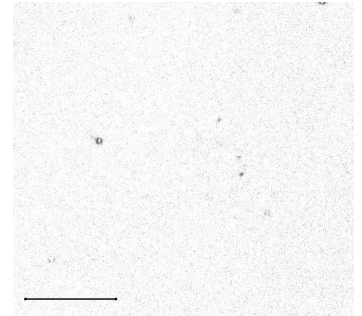
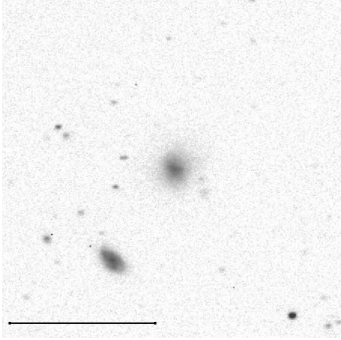
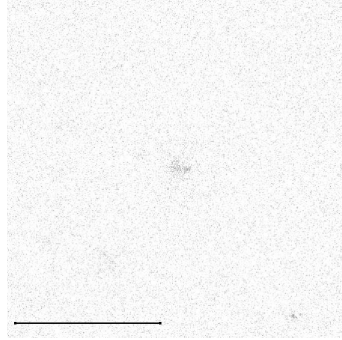


Figure 10: continue

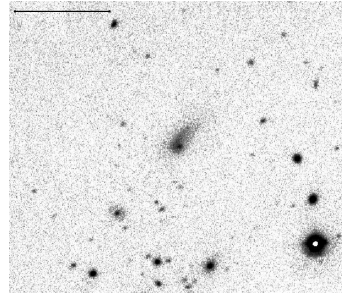
RA: 124959.1



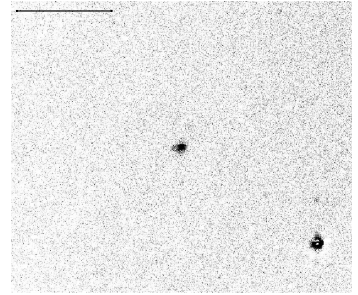
DEC: 54930.0



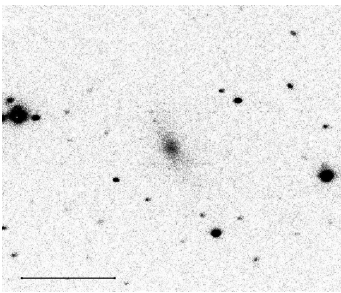
RA: 125059.9



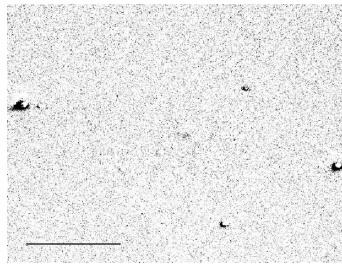
DEC: 90500.0



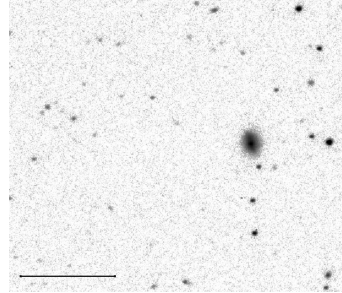
RA: 125258.9



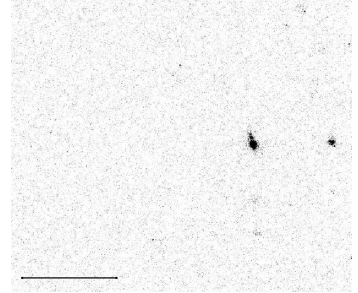
DEC: 142400.0



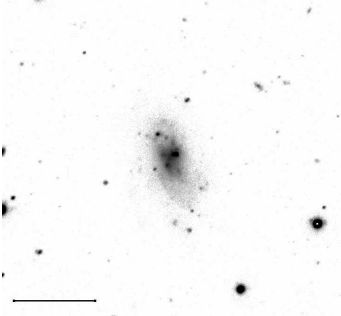
RA: 125448.3



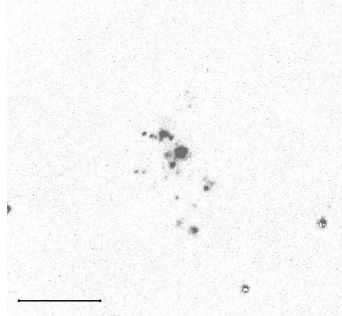
DEC: 153534.0



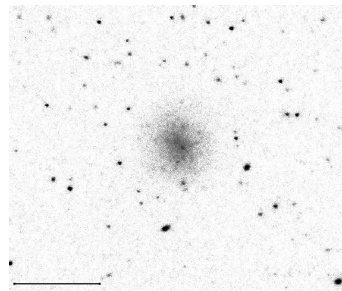
RA: 125549.6



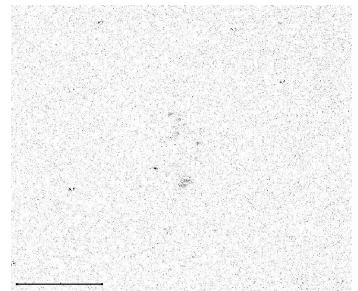
DEC: 40047.0



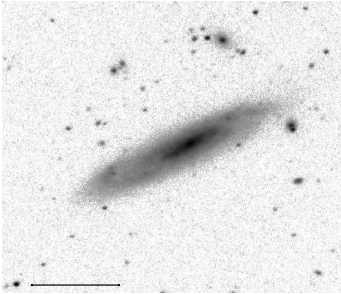
RA: 125642.9



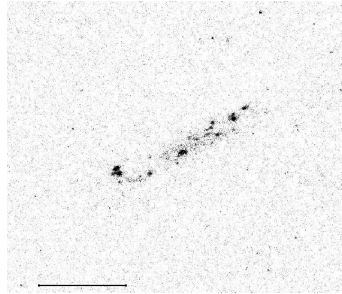
DEC: 115600.0



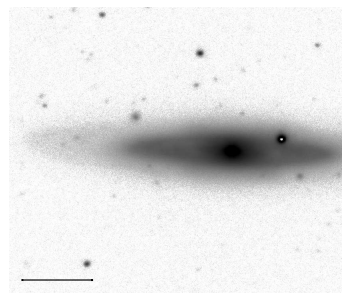
RA: 125816.5



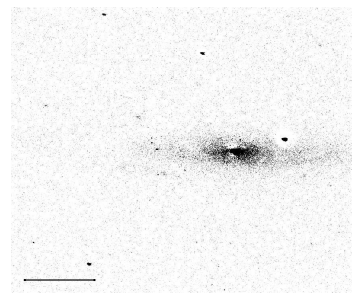
DEC: 143347.0



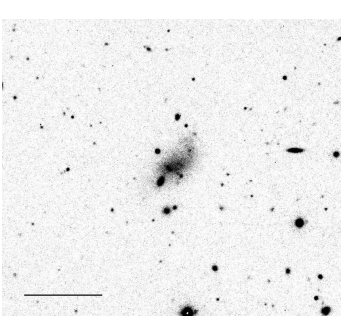
RA: 125925.8



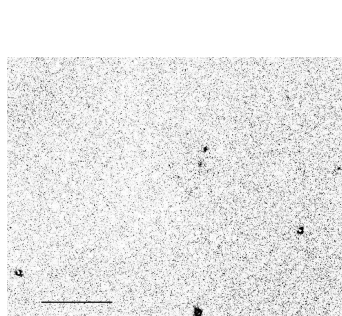
DEC: 141019.0



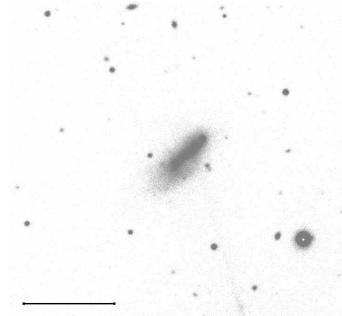
RA: 131206.9



DEC: 52830.0



RA: 132032.5



DEC: 52441.0

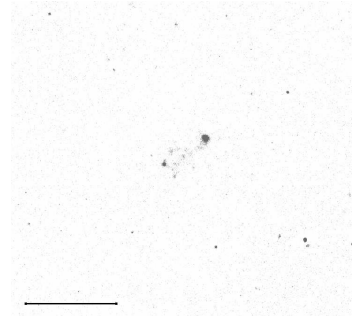
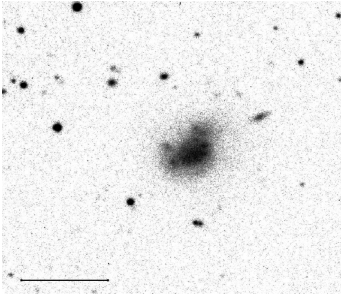


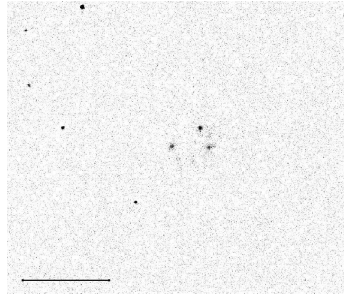
Figure 10: continue



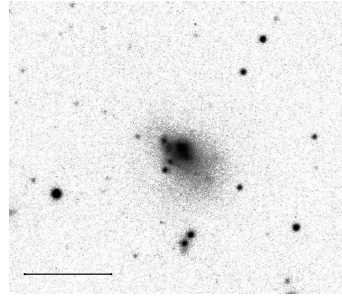
RA: 132702.1



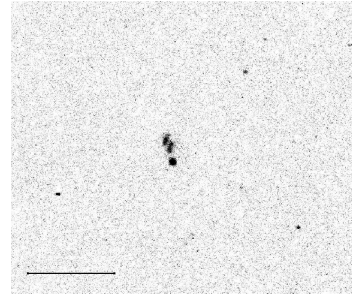
DEC: 100330.0



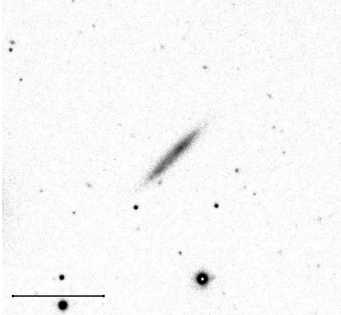
RA: 133437.2



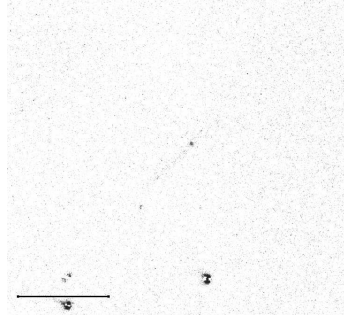
DEC: 84735.0



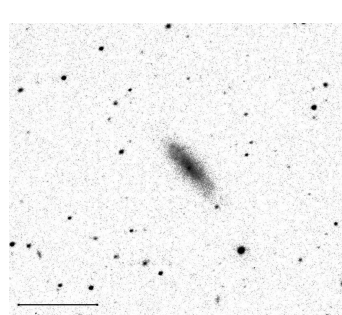
RA: 133602.5



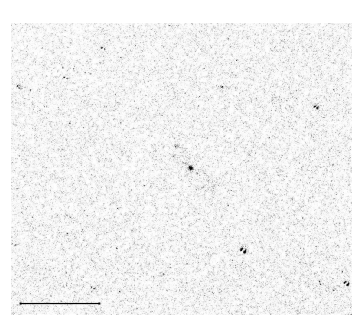
DEC: 81107.0



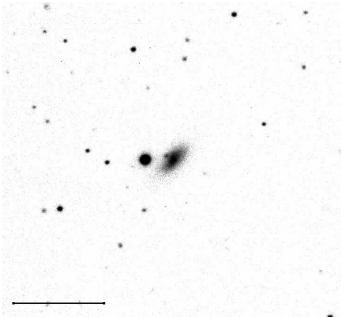
RA: 133830.4



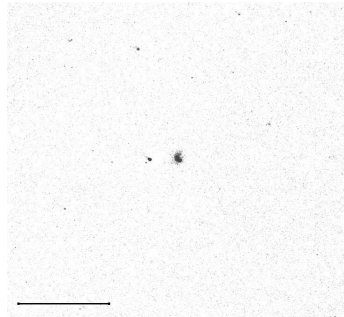
DEC: 82653.0



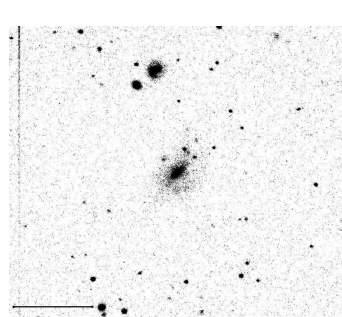
RA: 134641.4



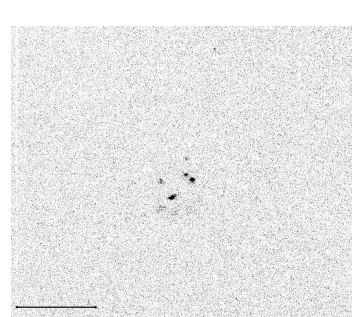
DEC: 63930.0



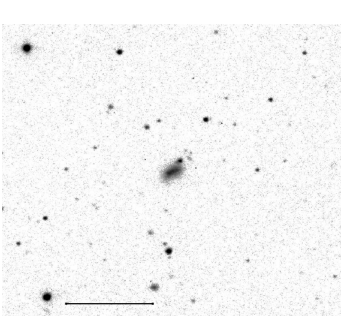
RA: 135739.9



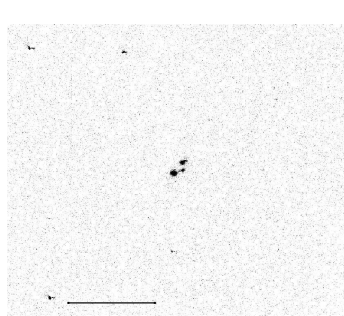
DEC: 152253.0



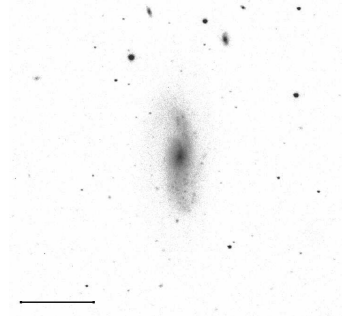
RA: 135842.7



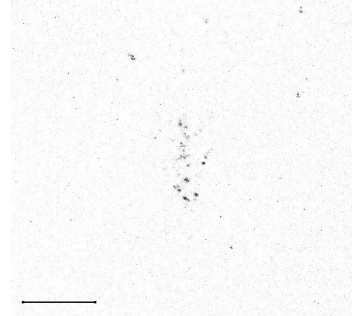
DEC: 141600.0



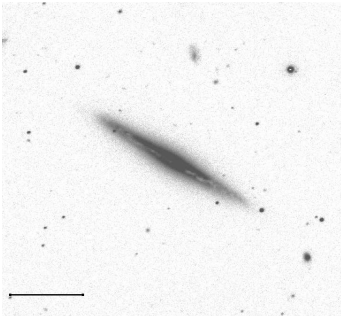
RA: 140447.7



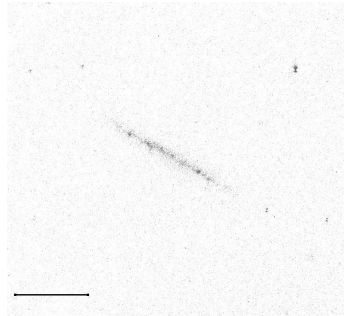
DEC: 84800.0



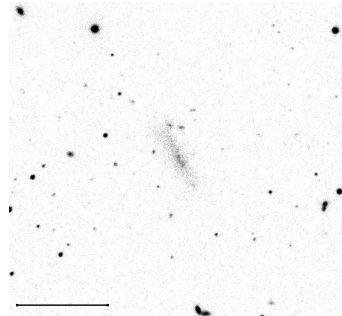
RA: 140632.1



DEC: 60153.0



RA: 141750.6



DEC: 65007.0

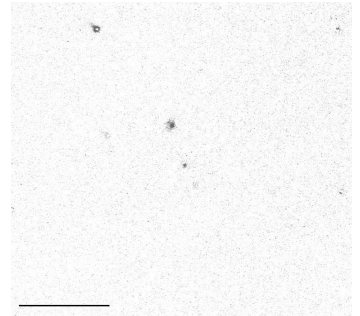
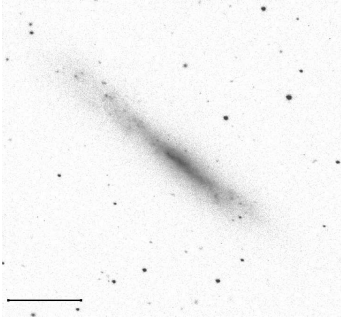
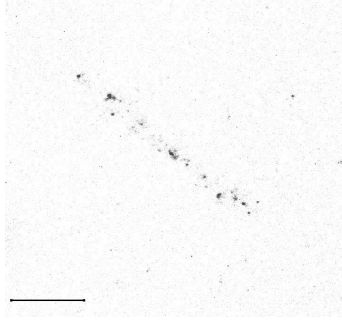


Figure 10: continue

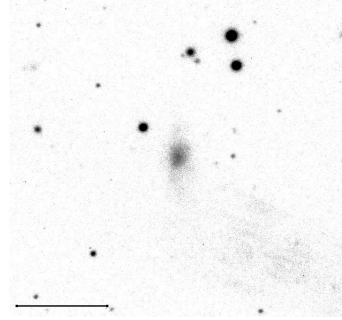
RA: 141945.8



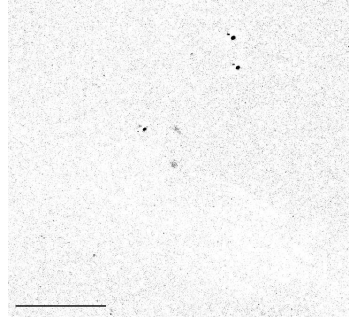
DEC: 92200.0



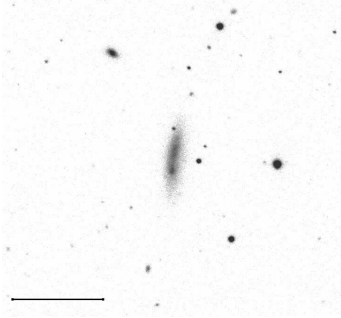
RA: 142045.2



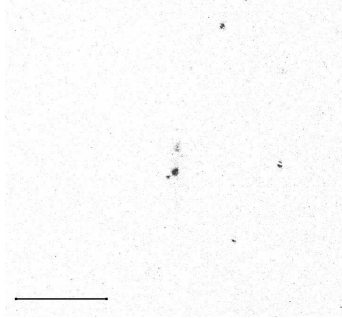
DEC: 83735.0



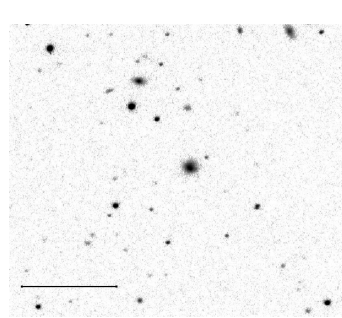
RA: 142710.4



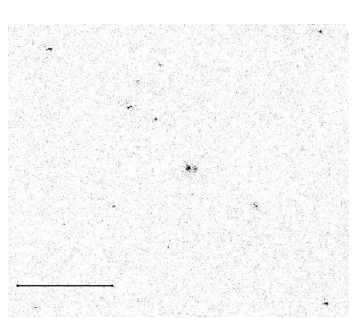
DEC: 50802.0



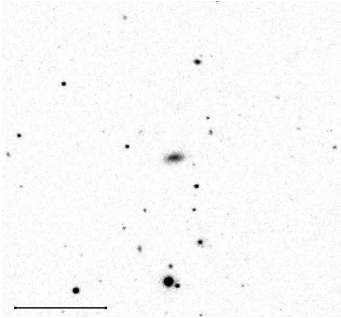
RA: 142851.9



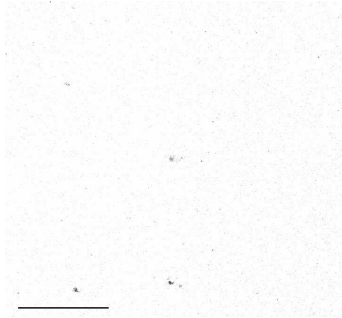
DEC: 123502.0



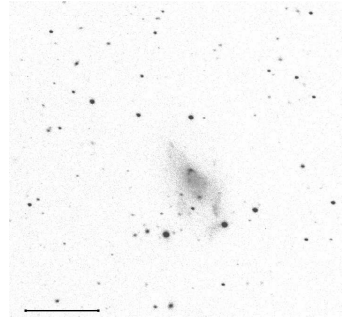
RA: 143046.1



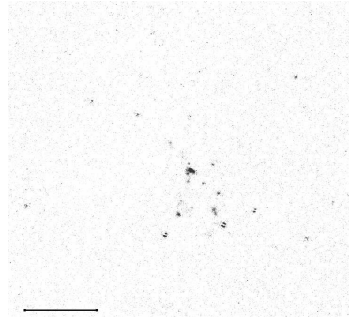
DEC: 71033.0



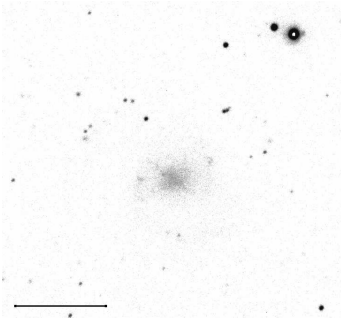
RA: 143439.7



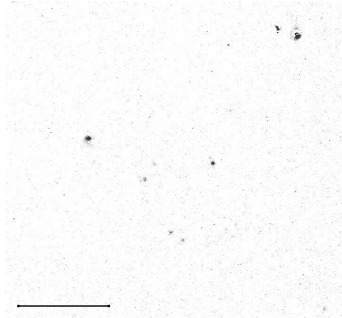
DEC: 41530.0



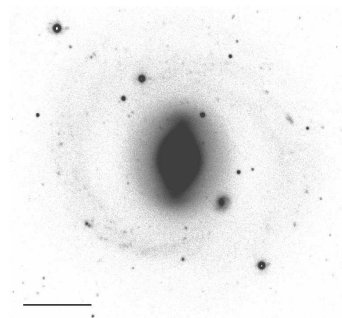
RA: 143523.3



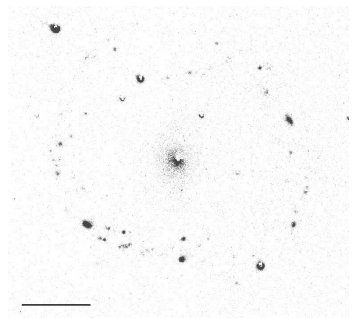
DEC: 51643.0



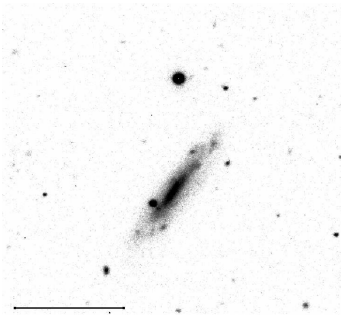
RA: 143911.3



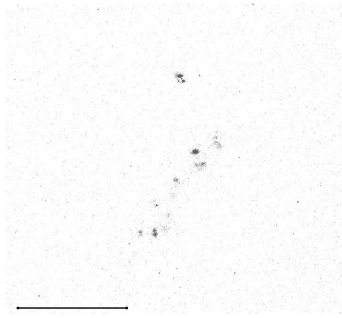
DEC: 52214.0



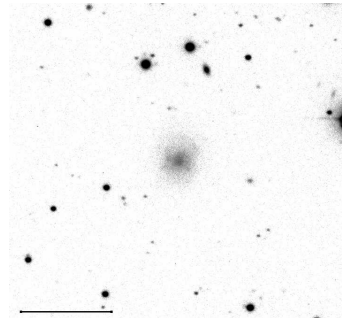
RA: 144302.5



DEC: 44619.0



RA: 144329.9



DEC: 43200.0

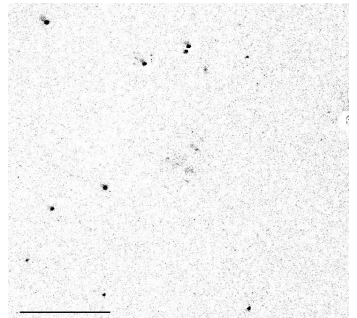
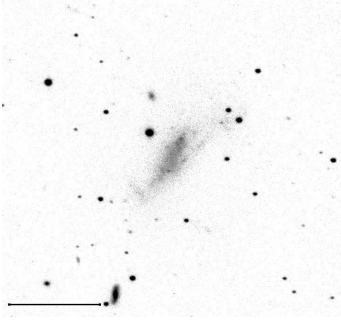
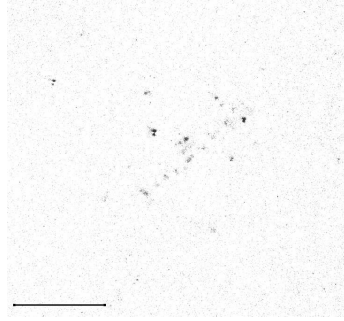


Figure 10: continue

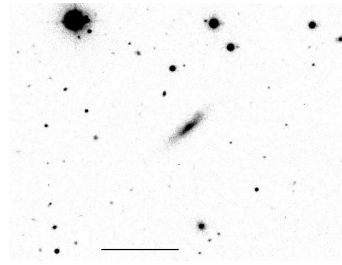
RA: 144521.5



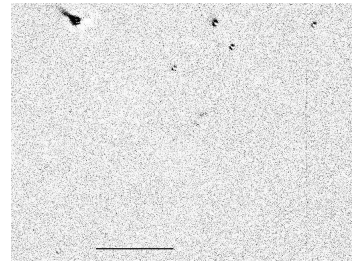
DEC: 75200.0



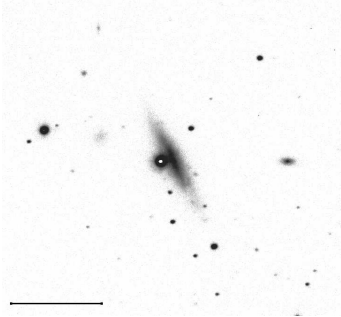
RA: 145242.8



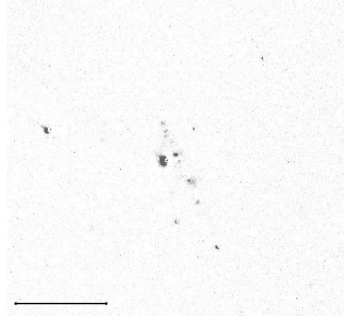
DEC: 114030.0



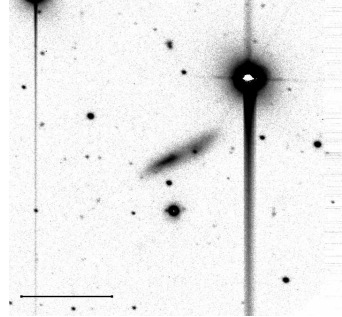
RA: 152300.7



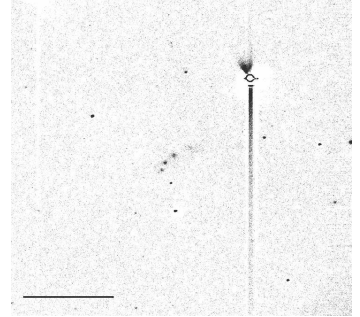
DEC: 43150.0



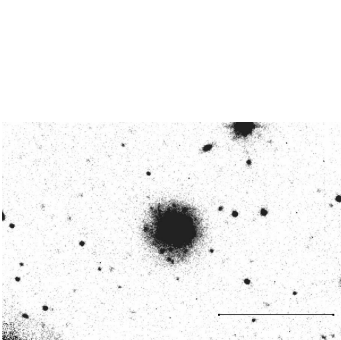
RA: 152412.3



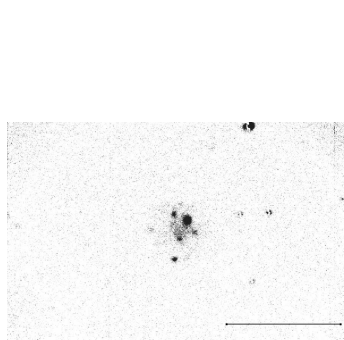
DEC: 72941.0



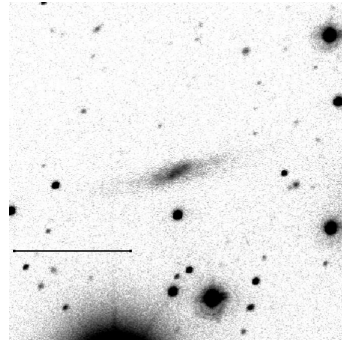
RA: 153139.3



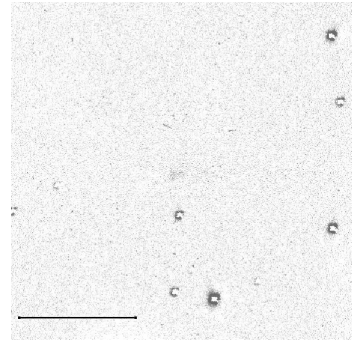
DEC: 153547.0



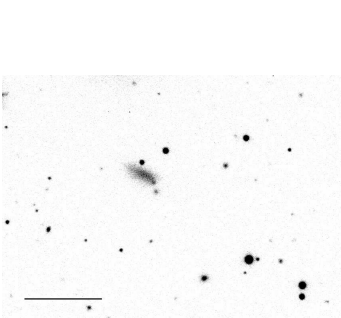
RA: 153429.9



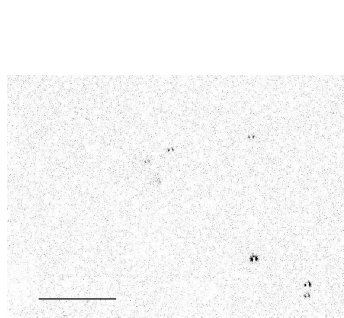
DEC: 150812.0



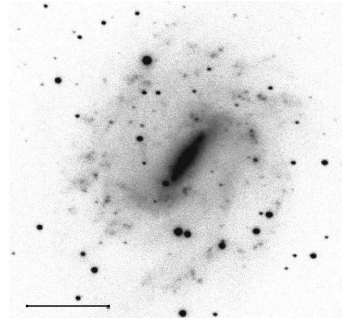
RA: 153506.5



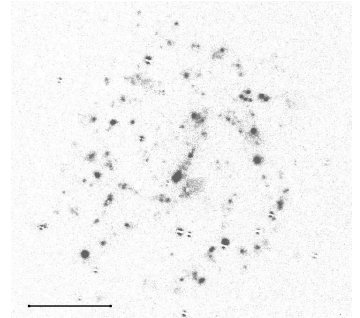
DEC: 121948.0



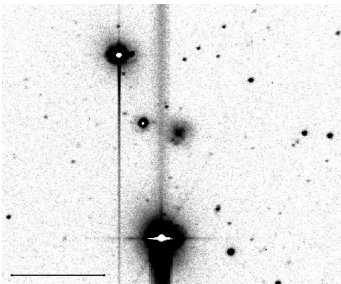
RA: 153737.1



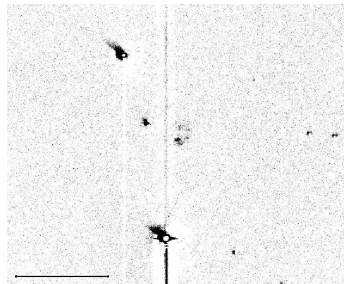
DEC: 55835.0



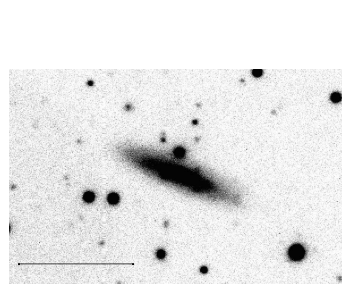
RA: 153836.5



DEC: 133120.0



RA: 154323.5



DEC: 142625.0

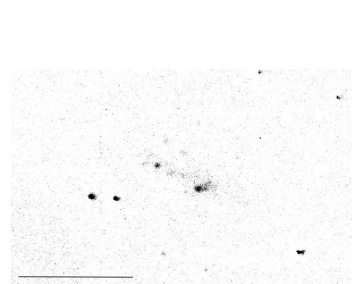
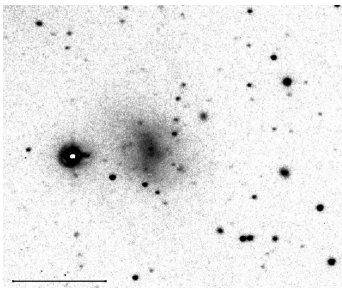
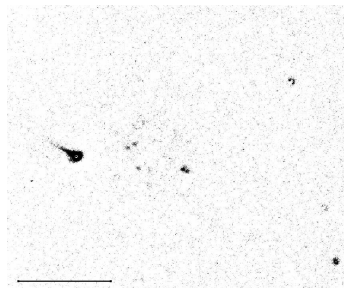


Figure 10: continue

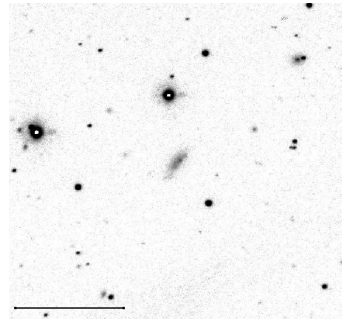
**RA: 154543.1**



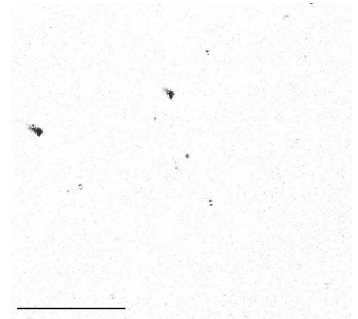
**DEC: 123035.0**



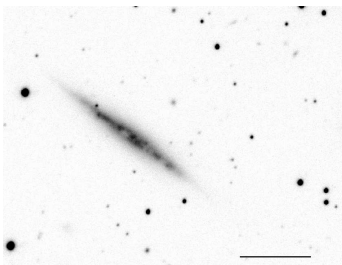
**RA: 155954.9**



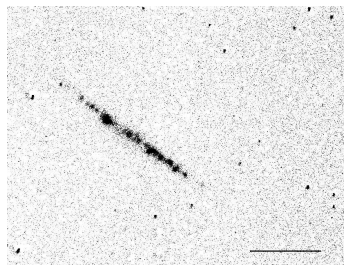
**DEC: 65317.0**



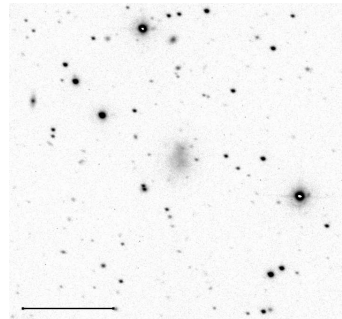
**RA: 160817.0**



**DEC: 73216.0**



**RA: 161220.5**



**DEC: 63237.0**

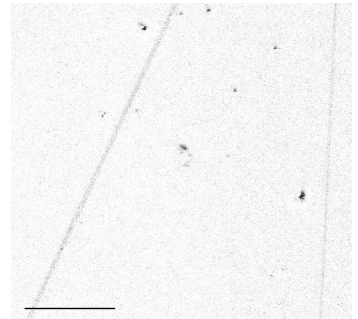
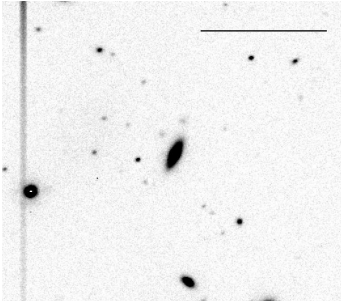
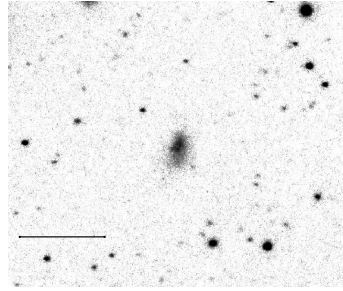


Figure 10: continue

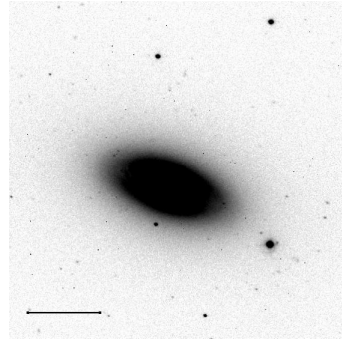
RA: 104010.7  
DEC: 45432.0



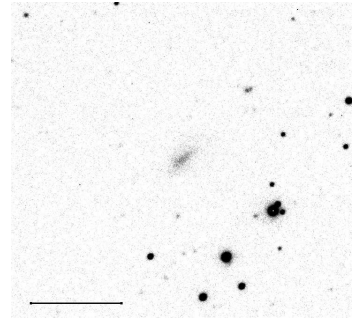
RA: 104457.3  
DEC: 115501.0



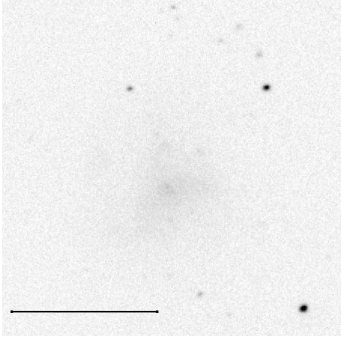
RA: 110018.6  
DEC: 135404.0



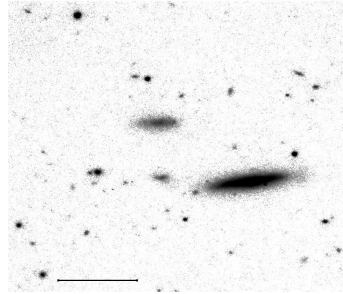
RA: 110301.8  
DEC: 80253.0



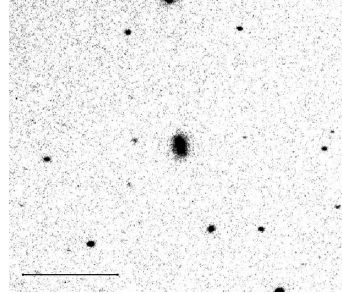
RA: 111251.7  
RA: 101200.0



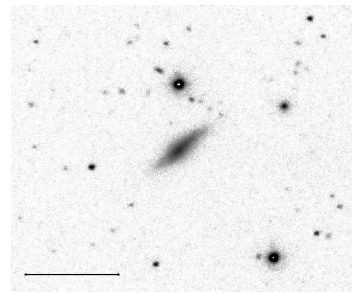
RA: 112222.4  
DEC: 130500.0



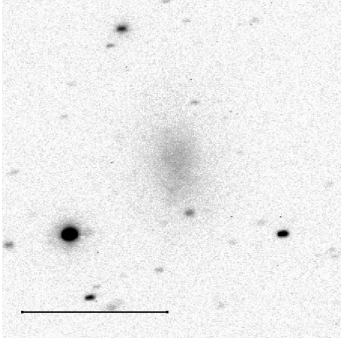
RA: 113349.0  
DEC: 144919.0



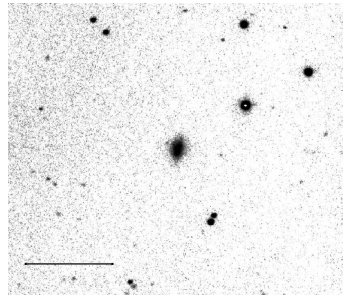
RA: 114056.5  
DEC: 140426.0



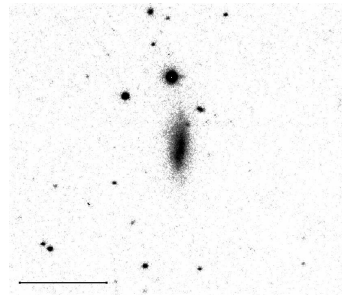
RA: 114310.1  
DEC: 141330.0



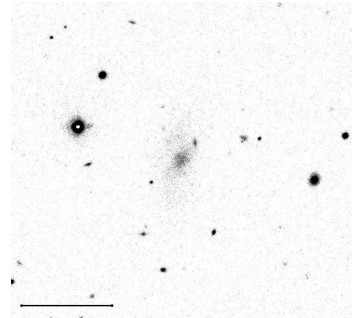
RA: 114326.6  
DEC: 112412.0



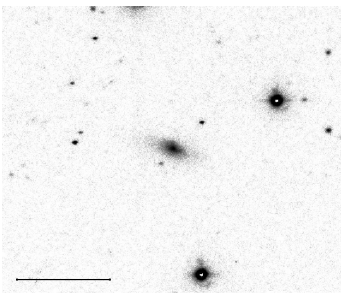
RA: 115746.9  
DEC: 120222.0



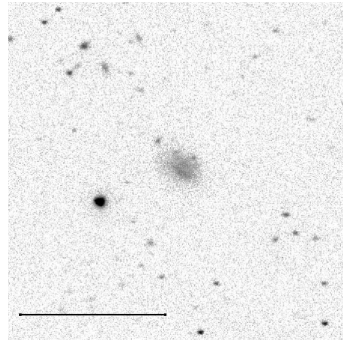
RA: 120122.2  
DEC: 142707.0



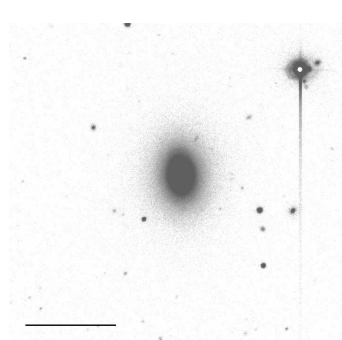
RA: 121002.0  
DEC: 114250.0



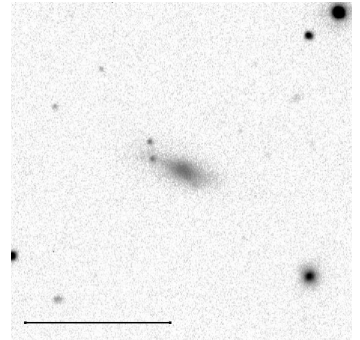
RA: 121041.7  
DEC: 143906.0



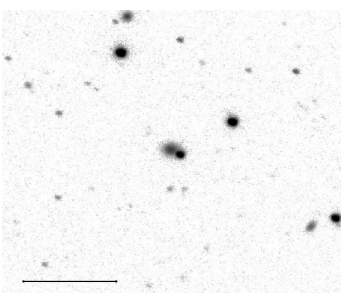
RA: 121351.1  
DEC: 71156.0



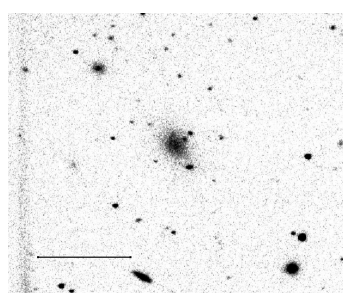
RA: 121426.9  
DEC: 55508.0



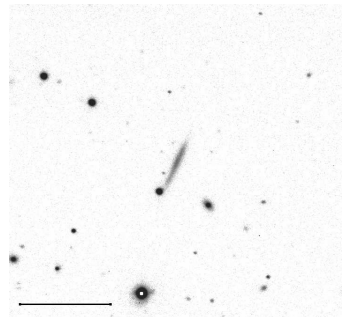
RA: 121528.1  
DEC: 103123.0



RA: 121553.4  
DEC: 140134.0



RA: 121727.4  
DEC: 71946.0



RA: 121842.5  
DEC: 122307.0

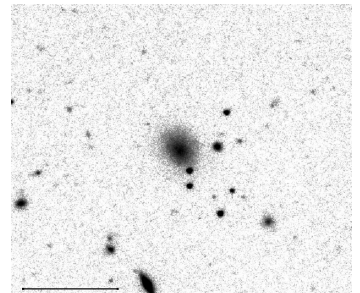
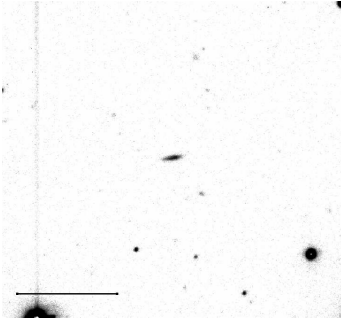
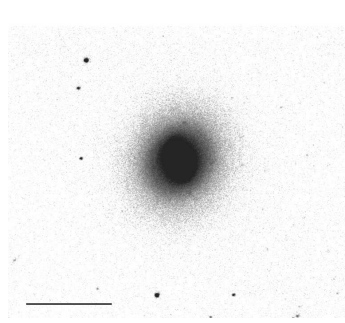


Figure 11: Atlas of 47 galaxies with no  $H\alpha$  emission, identified by their celestial coordinates (4 objects per line). The OFF-band images are given with a 1 arcmin bar

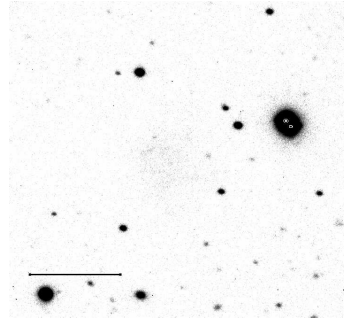
RA: 121918.8  
DEC: 62410.0



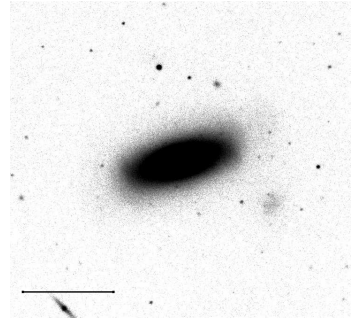
RA: 121929.2  
DEC: 145223.0



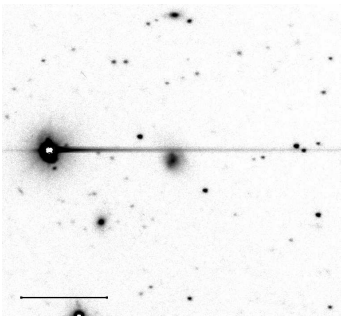
RA: 121952.8  
DEC: 64000.0



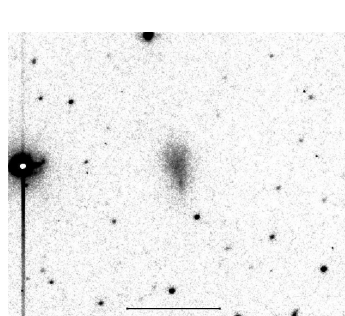
RA: 121953.5  
DEC: 52843.0



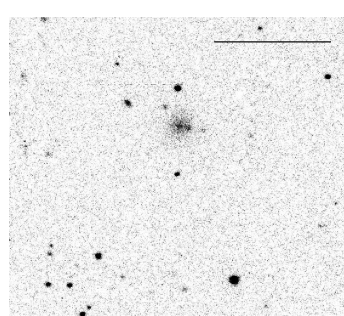
RA: 122059.9  
DEC: 124340.0



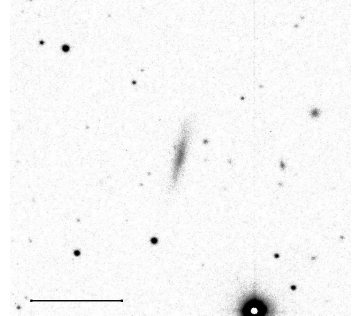
RA: 122305.5  
DEC: 134434.0



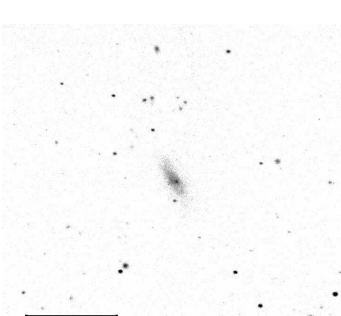
RA: 122603.0  
DEC: 81003.0



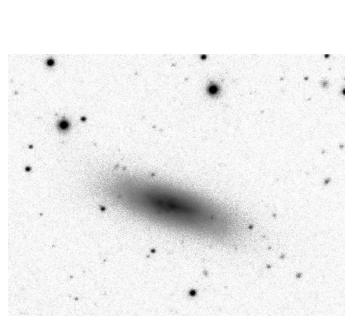
RA: 123514.3  
DEC: 102600.0



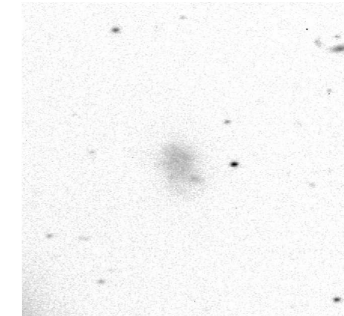
RA: 124420.8  
DEC: 60534.0



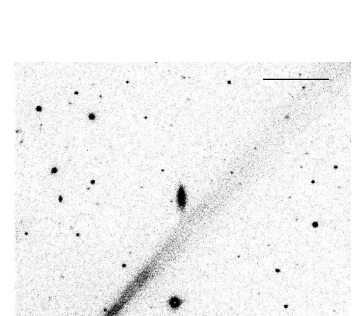
RA: 124445.2  
DEC: 122200.0



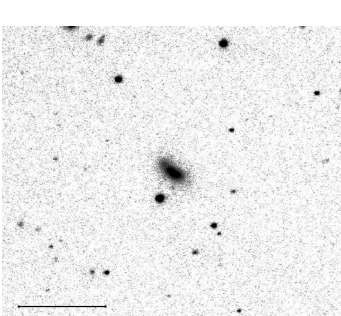
RA: 125106.6  
DEC: 120347.0



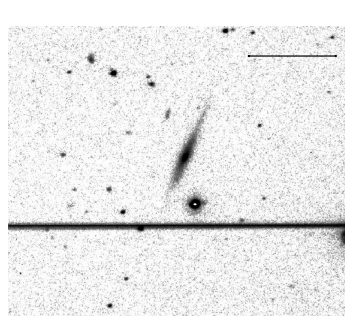
RA: 125401.5  
DEC: 92700.0



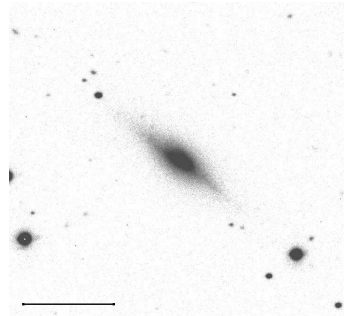
RA: 125941.3  
DEC: 110440.0



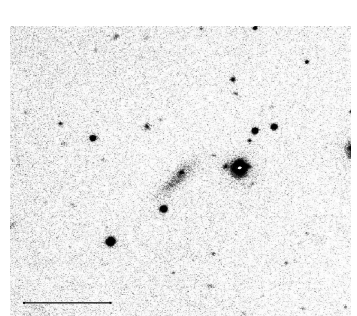
RA: 130352.7  
DEC: 105807.0



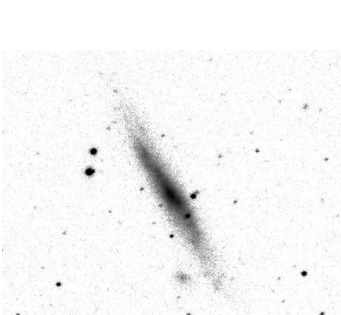
RA: 131233.6  
DEC: 71100.0



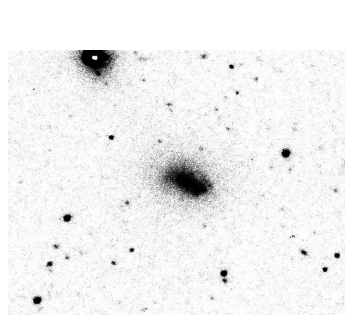
RA: 131951.0  
DEC: 134844.0



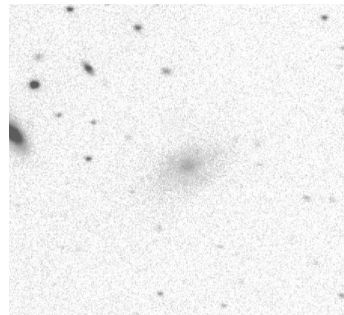
RA: 133545.3  
DEC: 85807.0



RA: 133643.9  
DEC: 83312.0



RA: 133850.8  
DEC: 80645.0



RA: 135324.9  
DEC: 51234.0

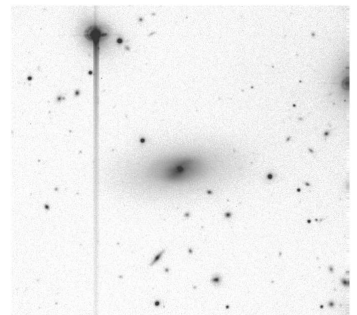
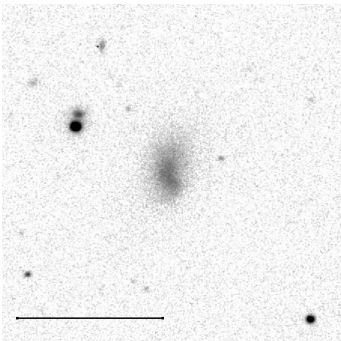
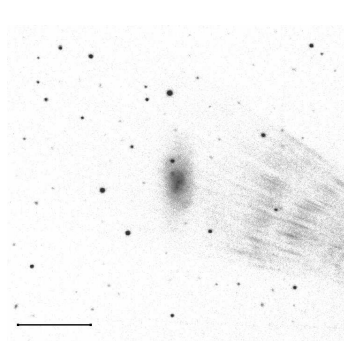


Figure 11: continue

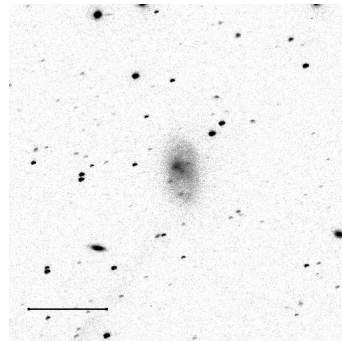
RA: 135609.6  
DEC: 53250.0



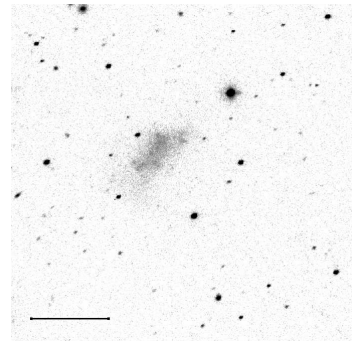
RA: 142424.3  
DEC: 81639.0



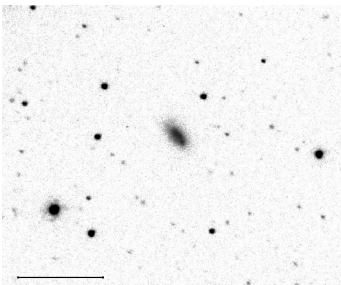
RA: 143639.3  
DEC: 113430.0



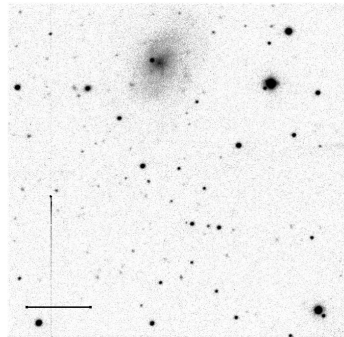
RA: 144624.1  
DEC: 141300.0



RA: 152058.9  
DEC: 121107.0



RA: 153821.0  
DEC: 125753.0



RA: 155638.3  
DEC: 61142.0

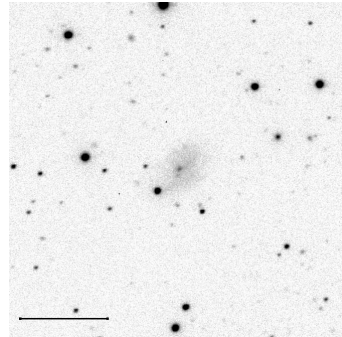


Figure 11: continue